



revimca
PRODUCTOS-SISTEMAS

CATALOGUE CONSTRUCTION

WATERPROOFING SYSTEMS

ADDITIVES FOR MORTARS AND CONCRETES

WATER REPELLENT TREATMENTS FOR SURFACE PROTECTION

STRIPPERS

FILLERS & SEALANTS

TREATMENTS FOR RUSTIC FLOORS

ADHESIVES

CEMENT MORTARS

SURFACE TREATMENTS

SCALE REMOVERS AND CLEANERS

ANTI-GRAFFITI

ETC.

C/ Canadá 12, Polígono Industrial El Viso,
2ª Fase. 29006 - Málaga
Tel.: 952 340 000 - Fax.: 952 349 100
www.revimca.com
email: revimca@revimca.com

WATERPROOFING SYSTEMS

revimca. Acrylic rubber waterproofing	A 1
revimca ESP. FACHADAS. Façade waterproofing surface treatment	A 2
FV-M 101. Cloth-mesh-glass fibre	A 3
FV-V 103. Glass fibre cloth	A 4
PAVISELL-A. Surface sealant for acrylic rubber	A 5
IMPERLAD. Waterproofing for exposed brickwork	A 6
REVIMUL. Waterproofing asphalt emulsion	A 7
AVENTUR. Transparent waterproof elastomer membrane	A 8
POLIREV. Waterproofing one-component membrane	A 9

ADDITIVES FOR MORTARS AND CONCRETES

IMPERLAN. Waterproofing for mortars	B 1
IMPERLAN PLUS. Waterproofing for concrete	B 2
PLASTICAN. Plasticizer and moistener for mortars	B 3
PLASTICAN ESP. Special plasticizer	B 4
REVIM-AD. Multiple action additive	B 5
HORMIN-AT. Anti-freeze for concrete	B 6
HORMIN PLUS. Antifreeze for mortar and Concrete especially at extreme temperatures	B 7
HORMIN-AC. Setting accelerator	B 8
HORMIN-RT. Setting retardant	B 9
FLUICEM. Superflux	B10

SCALE REMOVERS AND CLEANERS

DESCAL. Enhanced scale remover and cleaner	C 1
DESCAL A.E. Enhanced scale remover and cleaner (anti-foam)	C 2
QUISOL. Multiple action chemical cleaner	C 3
LESFAL. Cleaning detergent for façades	C 4
XITOL. Scale remover-rust remover-de-greaser	C 5
REVI-MOSS. Eliminator of spots in wet surfaces	C 6
DESINGEL. Viscous de-scaler for vertical surfaces	C 7

PAVING

PAVISELL. Surface sealant	D 1
PAVISELL-SPORT. Sealant for paving in sports centres	D 2
PAVISELL-PARKING. Sealant for paving in car parks	D 3
REVI-FLASH. Paint for road signposting	D 4
MV- M 104. Glass micro-spheres (signposting)	D 5
REVIPARCHE. Cold repairer of asphalt pavings	D 6
PAVIMPRES. Printed paving sealer	D 7

CEMENT MORTARS

REVICEM. Waterproof mortar for damp and wet walls	E 1
REVICEM-P. Quick sealant for water courses	E 2
REVICEM-REP. Thixotropic quick-hardening repair mortar	E 3
REVICEM-R. Quick-setting mortar for rendering	E 4

SURFACE TREATMENTS

REVIPER RUGOSO. Exterior textured stone surface treatment	F 1
REVIPER LISO. Exterior smooth stone surface treatment	F 2
REVIPLAST. Plastic paint for interiors	F 3
REVIMTER-M. Matt interior surface treatment	F 4
REVIMTER-S . Satin interior surface treatment	F 5

WATER REPELLENT TREATMENTS FOR SURFACE PROTECTION

RETROC-S. Water repellent for dry surfaces	G 1
RETROC-H. Water repellent for damp surfaces	G 2
RETROC-MAX. Concentrated water repellent for damp areas	G 3
MINTOR. Mineraliser	G 4
REVIOLE. Oil-proof treatment for porous surfaces (indoor and outdoor)	G 5

ADHESIVES

UNIPOX. 2-part epoxy resin for iron, wood and concrete	H 1
REVIM-AD . Multiple action additive	B 5
REVI-TAC. Jointing Adhesive for building materials	H 2
REVI-POX. General Purpose Epoxy Adhesive	H 3
REVI-FIX. Epoxy Adhesive for Quick Anchoring	H 4

STRIPPERS

DESCOFRAN. Concentrated stripper for iron and wood	I 1
---	------------

UNBLOCKERS AND RUST TRANSFORMERS

TUBEFON. Unblocker for drains	J 1
PAVON. Rust transformer for oxidised metal surfaces	J 2

TREATMENTS FOR RUSTIC FLOORS

RUSTISAN. Wet-effect treatment for rustic and clay floors	K 1
NERO. Sealant and decoration for waterproof joints	K 2

ANTI-GRAFFITI

GRACIL. Anti-graffiti cleaner	L 1
FILTER. Anti-graffiti sealant	L 2
BLUSTER. Flux of Paintings	L 3
DECASPRAY. Flux of Painted	L 4

FILLERS & SEALANTS

REVIMAX-P. Polyurethane putty for boards of high quality	M 1
MASIREVIM. Acrylic putty for boards and unions	M 2
SELLAFLEX-N. Elastic sealer neutral silconic	M 3
SELLAFLEX-S. Elastic sealer universal silconic	M 4

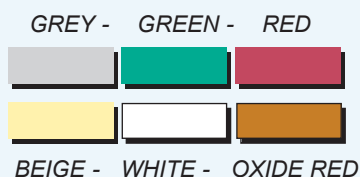
OTHERS

HIDROPEN. Swimming pool paint	N 1
REVIPEN. Solvent-based swimming pool paint	N 2
REVICUR. Concrete curing membrane	N 3
BIO-REV. Biological treatment For Cesspits	N 4
REVI-PACK. Efervescent Biological Treatment tablets	N 5
REVITOP. Antiskid for Enamelled Surfaces	N 6
REVIGRES. Anti-slip treatment for stoneware and painted surfaces	N 7
REVIGAL. Silicone application smoother	N 8
REVIBLUE. Guide lines fixer	N 9
REVIFOAM. Polyurethane monocomponet	N10
REVIPRIM. Adhesion promoter galvanized surfaces	N11



APPLICATIONS

revimca is the ideal product for waterproofing terraces, flat roofs, roofs, etc, in private houses, apartment blocks, hotel maintenance services, construction companies, etc.



Water-based waterproofer whose main component is a synthetic acrylic styrene co-polymer.
Once dry, it forms a layer that sticks strongly to the surface and is completely elastic.
It penetrates deeply into cracks and hollows and follows expansion and contraction movements without splitting.



PROPERTIES

- **Total waterproofing.**
- **Great adherence and fitting to the supporting base**, penetrating cracks and hollows.
- **Maximum resistance to traction.**
- Chemical stability.
- **Great resistance: to rubbing and wear**, to ultraviolet radiation (does not discolour or spoil).

Has the following advantages compared to other application instructions:

1. Low application cost.

2. **Quick and simple application**, without construction work or expensive or sophisticated tools.
3. **Improves the appearance of surface finishes.**
4. **Is compatible with other waterproofing instructions**, so it can be used to repair old waterproofing.
5. **The treated surface can be walked on.**
6. **Can be applied before new flooring is installed.**
7. Tools are cleaned simply with water.
8. **Reduces fire risk since it has no solvents or tars, making it self-extinguishing.**

INSTRUCTIONS OF USE

• SURFACE PREPARATION

Repair all hollows, cracks, etc in the surface to be waterproofed. Clean up dirt and leaves and wait until completely dry.

• PRIMING

Apply a first coat of waterproofing diluted with 20-25% water. Ensure that this priming penetrates all hollows and cracks in the surface. Apply with a brush or roller.

• PLACING GLASS FIBRE

Once the primer coat is dry to the touch, place the glass fibre cloth, gluing it to the primer with a coat of pure **revimca**

• FINISH

Once the second coat has dried, apply one or two coats of pure **revimca** to achieve optimal results.

COVERAGE: 1.5-2 kg. of product per m²

Presentation

- 1 Kg. in box of 16 uds.
- 5 Kg. in box of 4 uds.



Colors:
Ref. C1010 - WHITE
Ref. C1011 - OXIDE RED
Ref. C1012 - GREEN
Ref. C1013 - BEIGE
Ref. C1014 - GREY
Ref. C1080 - RED



Water-based waterproof covering providing façades with excellent protection against damp, UV radiation, gases, acids, fungus, dirt, etc.

APPLICATIONS

Protection and decoration of all types of façades:

- Cement.
- Previously painted.
- Any porous surface.

PROPERTIES

- **Excellent water resistance**, with minimal water absorption for perfect waterproofing.
- **Total waterproofing.**
- **Resistant to cold and heat cycles.**
- **Unaltered by UV radiation, etc.**
- Compatible with cement, fibre cement, concrete, etc.
- **Permeable to water vapour**, no blistering since it gives perfect transpiration.
- Has **harmonised elasticity.**
- **Easily applied.**
- **No bad smell.**

COVERAGE

The coverage depends on the state of the surface.

To give an idea, for optimal results with priming plus the undiluted finish, the coverage is approximately: **1Kg. per m².**

INSTRUCTIONS OF USE

"STIR VIGOROUSLY BEFORE USE"

The following steps are recommended for best results:

PREPARATION OF THE SURFACE TO TREAT:

Scrape the surface to remove remains of paint, etc.
Plug any cracks.

PRIMER COAT APPLICATION:

Apply a coat of waterproofing diluted in 20-25% of water. You must try that the priming penetrates in all the holes and cracks on the surface. The application will be done by brush or roller.

Application of glass fiber: once it is dried the priming coat, it will be proceed to apply the glass fiber. This glass fiber is adhered to the previous priming applying on it a pure coat of acrylic rubber in the moment of its application.

FINISH

Once the second coat is dried, it will be proceed to apply as many coats as necessary in order to get the consumption of 1 kg per m² to get optimal results (approx 2 coats)

Presentation

- 1 Kg. in box of 16 uds.
- 5 Kg. in box of 4 uds.



Colors:
Ref. C1045 - WHITE
Personalised Colors

FV-M 101

GLASS FIBRE CLOTH-MESH



APPLICATIONS

Especially designed to reinforce **revimca**, waterproofing and give it greater adherence:



FV-M 101 is a glass fibre cloth-mesh that complements our revimca acrylic rubber for total waterproofing, covering all types of cracks in any exterior surface regardless of how damaged or deteriorated it may be.

PROPERTIES

- **Adheres perfectly to our acrylic rubber.**
- **Has a perfect elasticity to hardness ratio.**
- **Gives the surface a full coverage and a greater resistance to wear and traction.**
- **Applying FV-M 101 with revimca acrylic rubber provides a totally waterproof surface that can be walked on.**

INSTRUCTIONS OF USE

Applied on the first layer of rubber when it is dry to the touch, followed by a second, undiluted coat.

PHYSIC CHARACTERISTICS:

WEIGHT 90 gr/m² + - 0,05
MEETS ISO 4605 STANDARD

THICKNESS 0,33 mm + - 0,05
MEETS ISO 4603 STANDARD
MINIMUM AVERAGE STANDARD

LENGTH N/5cm 500 700
MEETS ISO 4606 STANDARD

RESISTANCE TO TRACTION
TRANSV. N/5cm 400 600
MEETS ISO 4606 STANDARD

DRY RESIN PROVIDED: 5 gr/m² + - 0,1
MEETS ISO 1887 STANDARD

Presentation

- *It is presented in roller of 100 metres*





APPLICATIONS

Especially designed to reinforce revimca waterproofing and give it greater adherence:

- In especially irregular places in which FV-M 101 is too rigid.
- For all types of façades.



FV-V 103 is a glass fibre cloth comprising dry layers of randomly-arranged glass fibre strands bonded by a resin to give it suitable consistency.

PROPERTIES

- The product's glass fibres have a nominal diameter of 12.5×10^{-6} m produced from glass that is chemically **resistant and long-lasting in both acid and alkali environments, according to the ISO 719 standard.**
- **Adheres perfectly to our revimca product**
- Has a **perfect elasticity/hardness ratio.**
- Gives the surface total coverage and a **greater resistan-**

ce to wear and traction.

- **Applying the cloth with revimca gives a totally impermeable surface.**

INSTRUCTIONS OF USE

Applied on the first revimca coat when it is dry to the touch, followed by a second coat.

PRODUCT TOLERANCE LIMITS AND TEST INSTRUCTIONS

PROPERTIES	TEST INSTRUCTIONS	UNIT	NOMINAL SPECIFICATION	LIMIT	
				MAX.	MIN.
Weight Area	PTS-L-002	g/m ²	30.0	33	27
Adhesive content	PTS-L-003	%	7.0	8.5	5.5
Thickness	PTS-L-006	mm	0.29		

The specified values are an average of the samples tested from an example roll.

The product's tolerance limits have been obtained from the statistical analysis of the product's data.

Presentation

- *It is presented in roller of 250 metres*



PAVISELL-A

WATER-BASED SURFACE SEALANT



APPLICATIONS

The PAVISEL-A water-based surface sealant is recommended for:

- Finishing waterproofing using **revimca** waterproofing.
- On walls: to seal concretes and mortars, penetrating through channels, as with traditional treatments.



Sealant especially designed for waterproofing based on acrylic dispersions or styrene acrylics since its water base does not cause chemical incompatibilities.

PROPERTIES

- Gives surfaces **greater resistance to rubbing and wear**, increasing their durability.
- **Seals pores, repelling water and dust, to leave a perfect satin finish.**
- **Makes the surface self-cleaning.**
- Since it is water based, as with the waterproofing to which it is applied, it has the same elasticity and **prevents the formation of small splits that give the surface a 'spider web' appearance.**

- **Is easily applied**, since it contains no dangerous solvents.

COVERAGE

Following the instructions for use gives a coverage of 6 m² per kg. of product.

INSTRUCTIONS OF USE

FOLLOW THESE STEPS FOR A PERFECT FINISH

1. The surface must be clean and dry.
2. Application of first coat: The product is used straight from the can and applied with a brush or roller onto the last coat of the fully dry waterproofing.

Do not dilute in water since it will lose part of its properties.

3. A second coat may optionally be applied when the first is fully dry.

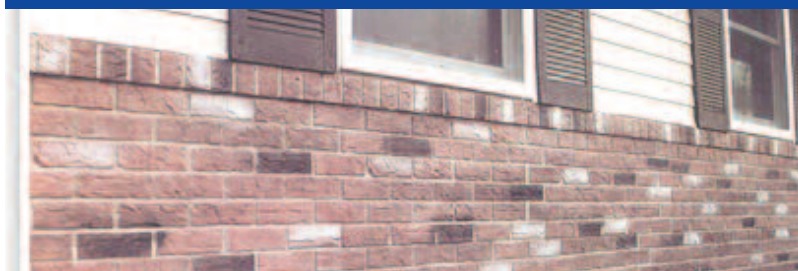
Presentation

- 1 Kg. in box of 16 uds.
- 5 Kg. in box of 4 uds.



IMPERLAD

WATER REPELLENT AND WATERPROOFING
PROTECTOR



APPLICATIONS

MPERLAD is recommended for waterproofing all type of vertical surfaces, especially brick and exposed brickwork, since it gives an impeccable aesthetic finish. It is also perfect for other materials such as tile, concrete, ceramics, tiles, stone, etc.



Co-polymer of styrene silicone acrylic resins in a water suspension.
Provides surfaces with an exceptional, deep water repellence.

PROPERTIES

- **Has deep capillary penetration** as its main active principle.
- Its finish is a transparent film that, once dry, **enlivens the colour of the surfaces to which it is applied.**
- Once it is completely dry, **the film is not attacked by air pollution or ultraviolet radiation.**
- **The water repellent film is permeable to water vapour and air, allowing surface transpiration and preventing the formation of pockets.**

- Because the product is water based, **it is comfortable and practical to handle.**

COVERAGE

Following the instructions for use provides a coverage of approximately **4m² per kg. of product.**

INSTRUCTIONS OF USE

The product may be applied by brush, roller or spray, either pure or diluted 50% in water.
On very porous surfaces, a second coat should be applied for a totally water-repellent surface.

STEPS FOR OBTAINING OPTIMAL COVERAGE

1. PRIMING

Apply the product diluted with 20% water as a first coat using a fine-hair brush.

2. FINISH

When the first coat is fully dry, apply a second coat using undiluted product.

Presentation

- **750 grm. in box of 16 uds.**
- **5 Kg. in box of 4 uds.**



REVIMUL

WATERPROOFING ASPHALT EMULSION



Anionic asphalt emulsion suitable for cold application in waterproofing construction materials.

APPLICATIONS

For waterproofing in construction, and very useful for construction companies, public works, maintenance and masonry contractors, quick repair of pavements, etc. .

- Waterproofing of tanks, building perimeter walls, foundations, trenches, piping, etc.
- High-performance, easy-to-use product, that gives a high-quality finish.

PROPERTIES

- Water-based product with **no unpleasant vapours**. Leaves a waterproof bituminous film when dry.
- Curing is by evaporation of the water content.
- **Penetrates quickly in pores, anchoring itself in their structure, and creating waterproof screens.**
- **Provides flexible, elastic surfaces that are unaffected by changes in temperature (cold or hot) when dry**
- **Non-flammable** product that **can be applied to damp surfaces.**
- The surfaces treated are **highly chemical resistant to salt water, acids and weak alkalis.**

INSTRUCTIONS OF USE

Before applying the product, check to see that the surface is clean and free of dust, grease, paint, plaster, etc. Remove loose particles. If necessary repair the surface with a suitable mortar.

Use it as it comes from the container or diluted in water, apply with a brush, roller or spray gun.

For waterproofing: Apply a primer coat diluted with 10-20% water for a 0.3-0.4 Kg/m² yield. Apply by impregnating the whole surface well. When the primer coat is dry, apply two or more undiluted coats with a 0.5 Kg/m² yield.

Waterproofing and tiling on terraces: Apply a mortar made with 2 parts product, 4 parts sand and one part cement, using the water necessary to achieve the desired consistency. Lay the tiles with this mixture.

Clean tools with water immediately after use or before they dry. Once the product has dried, solvent or gas-oil will be necessary.

Meets the UNE 104-231-88, Type EB code.

Presentation



AVENTUR

TRANSPARENT WATERPROOF ELASTOMER MEMBRANE



A single-component elastic waterproof aliphatic polyurethane elastomer, which protects treated surfaces from dampness.

APPLICATIONS

Waterproofing construction materials (concrete, mortar, brick veneer, fibre cement, ceramic roof tiles, bituminous products, etc.) providing a seamless transparent membrane, elastic and weather resistant.

- Treatment for industrial flooring providing wear-resistance and dust prevention.
- Protects acrylic rubber applications from dirt and accelerated aging by sunlight and ultraviolet rays.
- As waterproofing under flooring, it avoids leaking.

PROPERTIES

- Waterproofs treated surfaces and protects them from humidity, chemicals and ultraviolet rays.
- Provides a waterproof, seamless elastic membrane
- Provides traffic-bearing surfaces with no residual tacking. Treated surfaces remain clean longer without getting dirty from dust or dirt.
- The surfaces treated are easily cleaned with water and neutral detergent.
- Can be applied on damp surfaces.
- The finish is transparent and shiny, and the colour, design or finish of the support it is applied to is unaffected.
- It cures quickly, even at low temperatures and high ambient humidity, which allows the treated surfaces to be put into service in a short time.
- It does not emulsify in contact with water, so it can remain in permanent contact with damp areas.
- It is water vapour-permeable and highly hydrolysis resistant.
- The product has excellent features and mechanical resistance.

INSTRUCTIONS OF USE

Before applying the product, clean the surface to remove any dust, grease or dirt.

Apply as it comes from the container or dilute with 5-10% water. Apply two coats with a brush or roller, impregnating the surfaces well.

Clean tools with water.

COVERAGE

- Roller: 4-6 m²/Kg (1st coat).
7-10 m²/Kg (2nd coat).
 - Brush: 3-5 m²/Kg
(1st coat. 7-8 m²/Kg (2nd coat).
- Curing time: 15-30 minutes.
Repainting: 1 hour.
Finish: Shiny.

Presentation

- 800 grm. in box of 16 uds.
- 5 Kg. in box of 4 uds.





Elastomeric liquid membrane based on one-component polyurethane, resistant to the action of ultraviolet rays providing surfaces waterproof with a capacitance of fissures.

APPLICATIONS

Waterproofing of construction materials (concrete, mortar, bricks, cement, ceramic tile, bituminous products, polyester armed with fiberglass, etc), providing a continuous membrane, elastic, resistant to weather conditions and the humidity in new construction and rehabilitation and restoration of buildings.

PROPERTIES

- Self leveling mono-component of easy application product based on polyurethane.
- Waterproofs the treated surfaces leaving it protected against moisture, chemicals and ultraviolet rays action. It allows permanent contact with water.
- It provides elastic membranes that allow seamless the capacitance of cracks and fissures.
- It provides passable surfaces without residual tacking. This allows the treated surfaces remain clean for longer without getting dirty by dust or dirt.
- Treated surfaces can be cleaned easily with water and neutral detergent.
- It polymerized by reaction with atmospheric moisture to provide flexible and waterproof films of high durability.
- It has a very fast drying, even at low temperatures and humidity high, thus allowing the implementation underway of surfaces treated in a short space of time.
- In contact with water not it emulsifies, allowing permanent contact wetlands.
- It allows perspiration to water vapor being very resistant hydrolysis and the alkalinity of cement.
- Product of high performance and mechanical strength: Resistant to shocks and impacts.

INSTRUCTIONS OF USE

1. Before applying the product clean surfaces for remove remains of dust, grease or dirt. Apply on regular, stable, strong and uniform, surfaces without roughness. In the case of height changes greater than 2 mm applied a mortar of regularization.
2. Applies as it comes in the container or diluted with a 5-10% xylene (do not use universal solvent containing alcohols). Mix well until that incorporated completely solvent.

Wait 5 minutes before the application to eliminate stationary air. Applications they carried (tough) short hair roller brush (resistance to solvent), flat toothed (2-3 mm), rubber scraper or airless gun, good impregnating surfaces by applying two crossed hands.

Coverage: 1,5-2 Kg/m², in two crossed layers.

Drying time: 1 hour. **Repainted:** 4 hours.

For the cleaning of utensils used xylene.

Presentation

- 5 Kg. in box of 4 uds.
- 10 Kg. in box of 2 uds.





APPLICATIONS

IMPERLAN waterproofing and water repellent is recommended for making mortars more impermeable and giving them greater resistance than usual. Adding IMPERLAN allows the amount of water in the mix to be reduced by up to 5% due to its plasticizing effect on the mortar.



**Special waterproofing for
preparing mortars.**
**Very effective in very damp areas
that require waterproofing against
damp seepages due to the water
table level.**

PROPERTIES

- Does not change the properties of the mortar itself.
- Gives the mortar good waterproofing and better compacting.
- Increases adherence.
- Reduces the amount of water in the mix.
- Increases resistance to attacking agents and to freezing/melting cycles.
- Reduces vibration time.
- Keeps the mortar's surfaces cleaner, without blooming.
- Removes pores from the mortar.
- Free of chlorides.
- Has a secondary plasticizing effect.

INSTRUCTIONS OF USE

Added to the mortar after mixing, requiring re-mixing for 1 to 3 minutes.

COVERAGE

FOR PREFABRICATED UNITS

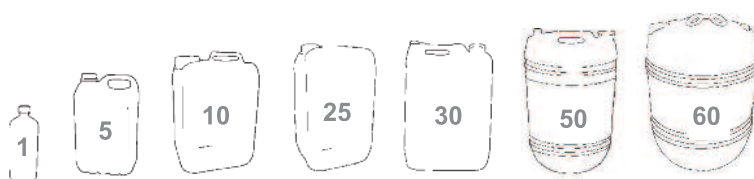
Recommended mix: **1% by weight of cement.**

IN MORTARS, RENDERINGS AND FOUNDATIONS

Recommended mix: **1-1.5% by weight of cement.**

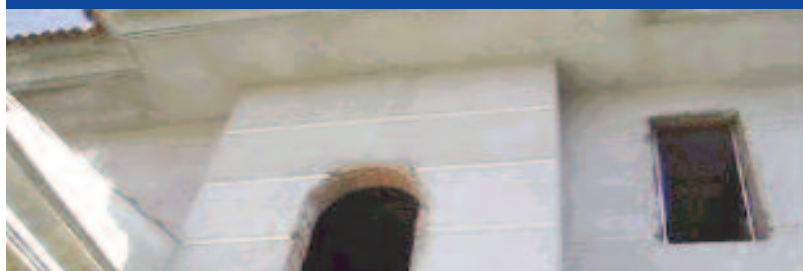
Presentation

- 1L in box of 20 uds.
- 5L in box of 4 uds.
- 10L in box of 2 uds.



IMPERLAN-PLUS

WATERPROOFING FOR
CONCRETE



APPLICATIONS

IMPERLAN PLUS concrete waterproofing is recommended for rendering a concrete or mortar water-repellent or impermeable.

Acts by blocking the capillary pores in the mix, preventing water from passing through them.



Additive designed to create a great resistance to water penetration in all concrete and mortar structures.

PROPERTIES

- Easily disperses in mortar and concrete , to ensure a perfect distribution.
- Increases resistance to freezing/melting cycles.
- Reduces vibration time.
- Prevents the formation of salts and blooming.
- Increases corrosion resistance in reinforced concrete.

- Does not alter setting times.
- Completely free of chlorides.
- Highly concentrated, providing very effective results with small amounts of product.

INSTRUCTIONS OF USE

Applied by diluting in the water in the mix.
Good waterproofing is achieved with cement-rich concretes, controlling the granularity of the aggregates and the placing and curing of the concrete.

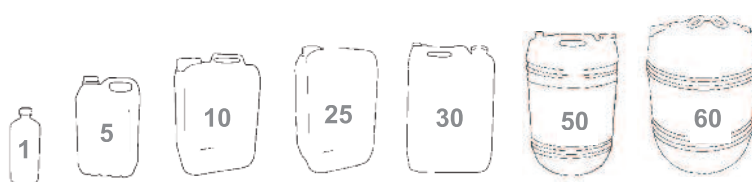
It is recommended that tests be made to determine the ideal amount in each case for achieving the required result.

COVERAGE

Variable between **0.5% and 1% by weight of cement.**

Presentation

- 1L in box of 20 uds.
- 5L in box of 4 uds.
- 10L in box of 2 uds.



PLASTICAN

PLASTICIZER AND MOISTENER
FOR MORTARS



Additive especially designed to give mortars and concretes greater cohesion, greater plasticity and considerably improved handling.

APPLICATIONS

Concretes and mortars where the following are required:

- Plasticity.
- Reduced amounts of cement.
- Improved handling.
- Increased quality and resistance.
- Prevention of blocking in pumps.

Can be used as a water reduction agent, reducing the amount of water in the mix by about 10%, thus increasing the mortar's resistance.

PROPERTIES

- **Reduces shrinkage** of the cement and prevents segregation, providing a more even mix.
- Has a **secondary aeration effect**, that is, it causes small air bubbles that have a lubricating effect. This aeration effect is approximately 2%.
- Provides **resistance to freezing/melting cycles**. That is, it has a partial anti-freeze effect.
- **Does not alter setting times.**

- Since it is free of chlorides, **it does not cause any corrosion and therefore can be used in reinforced concretes.**

COVERAGE

- 7g of product for each 35 kg. sack of cement.
- 5g of product for each 25 kg. sack of cement.

INSTRUCTIONS OF USE

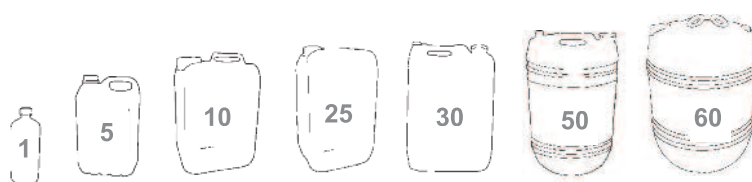
The product is used undiluted straight from the can.

It is added to part of the water in the mix and after about 30 seconds' mixing of the aggregate with the cement and the rest of the water.

- **A double strength is recommended for concrete transport and pumping.**

Presentation

- 1L in box of 20 uds.
- 5L in box of 4 uds.
- 10L in box of 2 uds.



PLASTICAN-ESP

SPECIAL PLASTICIZER
FOR MORTARS



Universal plasticizer, especially designed for improved handling and fluidity in concretes and mortars.

APPLICATIONS

Concretes and cements in which the following are required:

- Optimal concrete coverage.
- Less water in the mix.
- Ease of working.
- Plasticity.
- Prevention of blocking in pumps.

PROPERTIES

- Improved and more uniform **hydration in the mortar**.
- Improved quality of treated mortar.
- **Easier handling**, even in inaccessible places.
- **Reduced cracking and shrinkage**.

- **Easy handling**, since this product causes no skin or nasal irritation and no special precautions are needed when handling it.

COVERAGE

The recommended average concentration is **0.5%- 1% by weight of cement**.

INSTRUCTIONS OF USE

The most suitable way to use this special plasticizer is by diluting it in part of the water to be added to the mix.

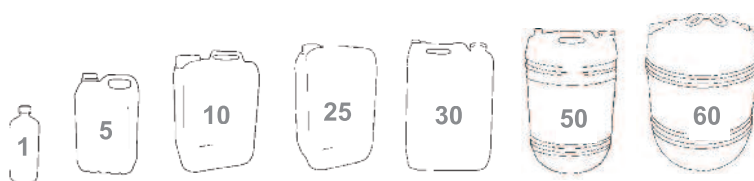
Prepare sufficient mix for at least half a working day.

If it cannot be diluted, it should be added once the water has been added.

This product may cause foaming since it is based on products that reduce the water's surface tension.

Presentation

- 1L in box of 20 uds.
- 5L in box of 4 uds.
- 10L in box of 2 uds.



REVIM-AD

MULTIPLE ACTION
ADDITIVE FOR BUILDING



Multiple action additive for use in waterproofing, adhesive and additive for mortars, concretes, plasters and stuccos.

APPLICATIONS

- Manufacture of industrial paving.
- Adherent priming.
- Joints between new and old mortars.
- Waterproofing for mortars.
- Modification of pavements.
- General building repairs.
- Putty for paving.
- Manufacture of ceramic tiles, as adhesive.
- Modification of plaster, stucco, etc.

PROPERTIES

- Ensures bonding and adherence to old and new surfaces.
- Increases the plasticity of new mortar.
- Reduces the amount of water in the mix by 15% to 20%, with constant plasticity, making the mortar easy to work with.
- Increases resistance to abrasion, to bending and to compression.
- Considerably increases impermeability.
- Increases resistance to air pollution and expansion and contraction.
- Very suitable as the only binder in construction adhesives.

INSTRUCTIONS OF USE

Added to the water in the mix, with the proportion depending on the application.

COVERAGE

INDUSTRIAL PAVING

Minimum proportion: 2%. Maximum proportion: 5% by weight of cement.

ADHERENT PRIMING

Approximate proportion: 200 g per m²

COMPENSATION LAYERS

Approximate proportion: 1% by weight of cement

IMPERMEABLE MORTARS

Approximate proportion: 3.3% by weight of cement.

PUTTY FOR PAVING

Approximate proportion 3.5% by weight of cement.

ADHESIVE FOR CERAMIC TILES

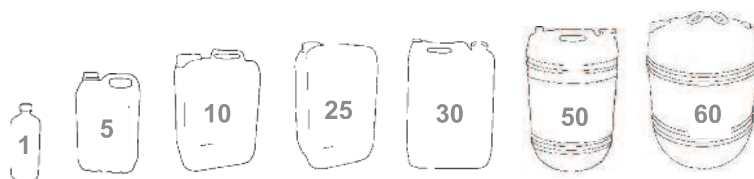
Approximate proportion: 5 to 10% by weight of cement.

MODIFICATION OF PLASTER

Approximate proportion: 4 to 8% by weight of plaster.

Presentation

- 1L in box of 20 uds.
- 5L in box of 4 uds.
- 10L in box of 2 uds.



HORMIN-AT

ANTI-FREEZE FOR CONCRETE



Product that protects the concrete from low temperatures; the protection is effective in temperatures down to -6 to -8 ° C.

APPLICATIONS

Our anti-freeze can be used for all types of concrete, hydraulic mortars and cement mixes.

There is no corrosion problem since it is completely free of chlorides.

Allows work to continue in temperatures down to -6 ° C to -8 ° C, without the danger of cracks caused by freezing.

PROPERTIES

- The anti-freeze effect of our product involves two fundamental points:
- **Reduction of the freezing point** of the water in the mix, very important in freezing weather.
- When ice inevitably appears at low temperatures, it forms micro-crystals instead of large ice crystals, producing a smaller overall increase in volume.

With HORMIN-AT, the pressure in the capillaries in the concrete is lower, **reducing the risk of damage.**

- Provides **greater fluidity** in the concrete, allowing its distribution in moulds and coffering, this improving the finish.

INSTRUCTIONS OF USE

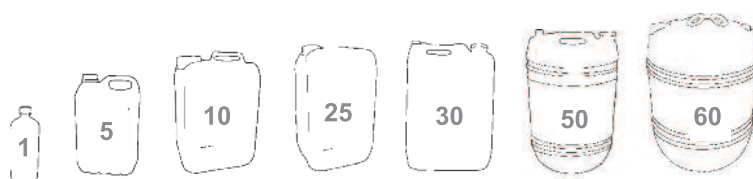
Used as supplied, without the need for dilution. Added directly to the concrete mixer or to the water in the mix.

COVERAGE

The recommended proportion is 1 to 2% by weight of cement, depending on the circumstances of the work and the temperature.

Presentation

- 1L in box of 20 uds.
- 5L in box of 4 uds.
- 10L in box of 2 uds.



HORMIN-PLUS

ANTIFREEZE FOR MORTAR AND
CONCRETE ESPECIALLY AT EXTREME
TEMPERATURES



**Organic admixture
that keeps water in the cement
from freezing**

APPLICATIONS

Very useful in construction companies, masonry contractors, public works, etc.

- Very useful in cold regions or extreme climates.

PROPERTIES

- Prevents **freezing of the water content in cement.**
- Avoids internal crystallisation of the water accumulated in the capillary structure of mortar and concrete.
- Improves **workability of concrete and mortar in extremely cold climates.**
- Prevents low temperatures at construction sites from causing unfavourable effects during curing.
- Makes mixing easier when steep drops in temperature are predicted.
- **Does not modify original or final bond strength of mortar or concrete where applied.**

INSTRUCTIONS OF USE

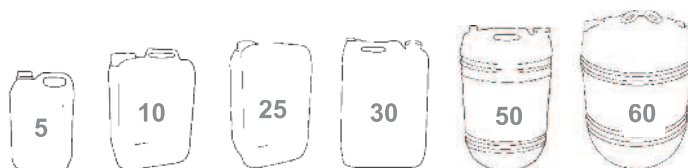
Use dissolved in cement mix water depending on the ambient temperature the mortar or concrete is to be protected from according to the table below: :

Machine mix in cement mixer or by hand in a bucket and continue adding cement to the mixture

Protection temp	Product	Water
- 49 °C	6.7 L	3.3 L
- 33 °C	5.5 L	4.5 L
- 21 °C	4.4 L	5.6 L
- 15 °C	3.9 L	6.1 L
- 8 °C	3.3 L	6.7 L

Presentation

- 5L in box of 4 uds.
- 10L in box of 2 uds.



HORMIN-AC

SETTING ACCELERATOR



Setting accelerator. Used in reinforced concretes or mixed concretes to reduce the setting time or to maintain these times at low temperatures.

APPLICATIONS

- Repairs to roads, concrete floors, general building.
- In work that must be finished urgently, where there is no time to wait for the natural setting time.
- In work where coffering must be removed quickly.

Generally, for reinforced or mixed concrete where the setting time must be reduced or to maintain it for both types at low temperatures.

PROPERTIES

- **Reduces the start and end setting times at any temperature**, especially in cold weather.
- **Compensates for the slow development of strength in concrete at low temperatures**, while not affecting its workability.
- **Provides even setting** since hydration occurs uniformly throughout the concrete mix.
- Because it contains no chlorides, this product **causes no corrosion problems** and can be applied in all types of concrete, hydraulic mortars and cement mixes.

INSTRUCTIONS OF USE

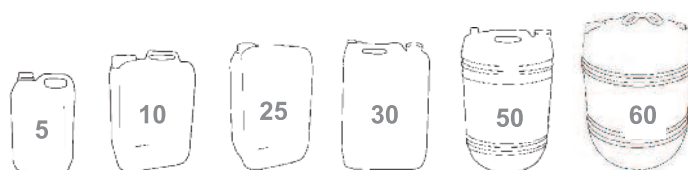
Supplied ready for use. Added directly to the concrete mixer or to the water in the mix.

COVERAGE

The recommended proportions are **0.66-1.3 % by weight of cement**, depending on the site circumstances and temperature.

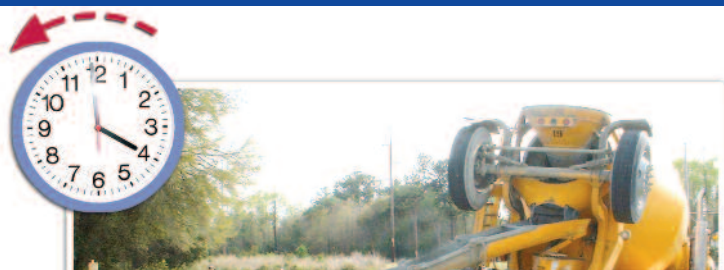
Presentation

- 5L in box of 4 uds.
- 10L in box of 2 uds.



HORMIN-RT

SETTING RETARDANT



Special product for increasing the plasticity time of concrete. Extends the time available on the site or for transport. Delays the start of setting without changing the hardening speed or final strength.

APPLICATIONS

We recommend the use of our retardant in all cases where the start of concrete setting must be delayed, such as:

- Concrete to be transported long distances.
- Slow and complicated concreting.
- Concreting at high temperatures.
- Concrete pumping.
- Concrete without expansion joints, etc.

PROPERTIES

- Delays the hydration of cement particles.
- By delaying the start of setting, **it protects the concrete in warm climates or at high temperatures by eliminating the risk of cracks.**
- **Allows ready-mixed concrete to be transported** without the risk of premature hardening.

COVERAGE

The mix varies between **1 and 1.5 % by weight of cement** for setting delays of between 10 and 15 hours at average temperatures of 20 °C, approximately.

INSTRUCTIONS OF USE

Added to the concrete in the water in the mix.

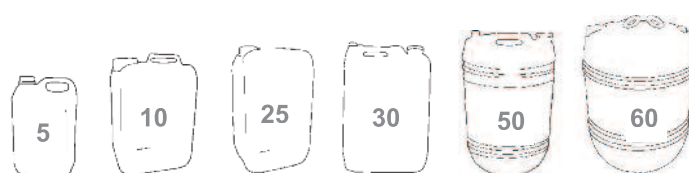
RETARDANT PROPORTION FOR 50 kg. OF CEMENT (IN LITRES)

Concrete temperature	Setting delay (in hours)							
	3	5	7	9	12	15	18	21
+10	-	-	0,10	0,15	0,25	0,35	0,45	0,50
+15	-	0,05	0,15	0,20	0,30	0,40	0,55	0,75
+20	0,05	0,10	0,20	0,25	0,40	0,55	0,70	0,90
+25	0,10	0,15	0,25	0,30	0,50	0,75	1	-
+30	0,15	0,20	0,30	0,40	0,60	1	-	-
+40	0,25	0,65	1	-	-	-	-	-

The following table shows the on-site setting times according to the proportion of retardant and concrete temperature.

Presentation

- 5L in box of 4 uds.
- 10L in box of 2 uds.





APPLICATIONS

Our superflux is recommended for obtaining mortar or concrete with the following properties.



Superflux product that greatly increases the workability of fresh concretes and mortars, considerably reducing the amount of water in the mix.

PROPERTIES

- Used as a flux, it provides **self-levelling concretes** that are very fluid and save large amounts of work.
- Used to reduce the amount of water, it provides **stronger concretes**, improving impermeability and adherence to reinforcements.
- **Water can be reduced by 25-30%.**
- **Does not introduce air into the concrete.**
- **Completely free of chlorides.**
- **Eliminates mechanical vibration.**
- **Reduces segregation and water seepage.**

INSTRUCTIONS OF USE

Used as supplied in the can, without dilution.

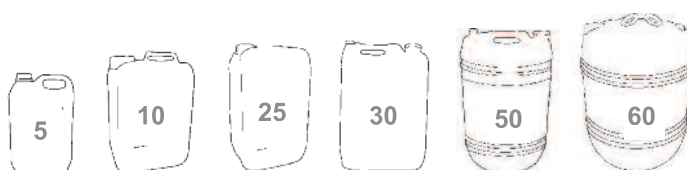
Can be added to the water in the mix (preferable) or to the concrete when already mixed.

COVERAGE

RECOMMENDED MIX: On average, 0.5-3% by weight of cement, depending on the liquidity required in the concrete.

Presentation

- 5L in box of 4 uds.
- 10L in box of 2 uds.



DESCAL

SCALE REMOVER, ENHANCED CLEANER
AND RUST REMOVER



Scale remover and cleaner for all types of insoluble salts such as calcium sulphate, calcium carbonate, magnesium hydroxide, insoluble silicates, etc, converting them into water-soluble compounds.

APPLICATIONS

Removes cement residues, lime deposits and dirt stains on cement floors.

- Scale remover for bricks, floors and tiles, drains, down pipes, industrial dishwashers, washing machines, fur in WCs, etc.
- Rust remover for metals.
- Cleaner for lime scales, algae, blooming, etc.

PROPERTIES

- Dissolves cement residues and lime deposits.
- Contains corrosion inhibitors that cancel the effects of acids on metals.
- Contains wetting agents that reduce surface tension so that the product reaches even the most hidden areas.
- Acts as a rust remover in metals, allowing later treatment.
- Removes algae, blooming, mosses and scaling in swimming pools, ponds, fountains and boats.
- Cleans greases and oils from cement floors..

INSTRUCTIONS OF USE

DE-SCALING OF DRAINS, DISHWASHERS AND WASHING MACHINES

Dilute 1 part of product for each 2 parts of water.

In drains, pour in 100 cc. and repeat the operation three times at 10-minute intervals.

In dishwashers and washing machines, apply 250 cc. in the washing water and allow the washing and rinsing processes to be carried out. Repeat the operation if necessary.

To remove fur in the WC, pour in 100 cc. and scrub with a brush.

DE-SCALING IN BUILDING WORK

To remove remains of concrete and cement from floors and tiles, use 1 part of product for 2-10 of water, depending on the degree of scaling.

CLEANING SWIMMING POOLS, FOUNTAINS, BOATS, ETC

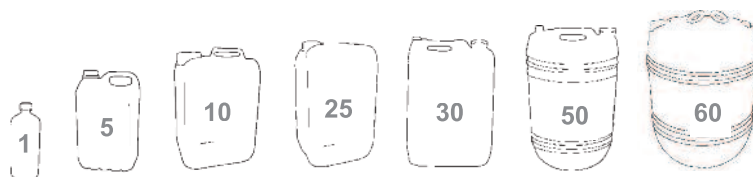
As above.

RUST REMOVER FOR CLEANING METALS

Dilute 1 part of product in 5 of water. Apply to the metal with a brush. Rinse and dry and protect with our REVI-NOIR anti-rust varnish or with our PAVON rust transformer to prevent further rusting.

Presentation

- 1L in box of 20 uds.
- 5L in box of 4 uds.
- 10L in box of 2 uds.



DESCAL A.E.

SCALE REMOVER AND ENHANCED
CLEANER (ANTI-FOAM)



Scale remover and cleaner for all types of insoluble salts such as calcium sulphate, calcium carbonate, magnesium hydroxide, insoluble silicates, etc, converting them into water-soluble compounds without producing foam during the reaction.

APPLICATIONS

- Building: Scale remover for floors and tiles and rust remover for metals.
- Catering: Scale remover for pipes, circuits, boilers, cooling towers, etc.
- Swimming pools: Cleaner for lime scale, algae, blooming, etc.
- Industry and workshops: Rust remover for tools and machinery.

PROPERTIES

- Dissolves cement remains and lime scale.
- Contains anti-foam agents that prevent foam formation in the reaction with the oxides or calcium salts.
- Contains corrosion inhibitors, that cancel the effects of acids on metals.
- Contains wetting agents that reduce surface tension so that the product reaches even the most hidden areas.
- Acts as a rust remover on metals, allowing later treatment.
- Removes algae, blooming, mosses and scaling in swimming pools, ponds, fountains and boats.
- Cleans greases and oils from cement floors.

INSTRUCTIONS OF USE

DE-SCALING OF DRAINS, DISHWASHERS AND WASHING MACHINES:

Dilute 1 part of product for each 2 parts of water.

In drains, pour in 100 cc. and repeat the operation three times, at 10-minute intervals.

In dishwashers and washing machines, apply 250 cc. in the washing water and allow the washing and rinsing processes to be carried out. Repeat the operation if necessary.

To remove fur in the WC, pour in 100 cc. and scrub with a brush.

DE-SCALING IN BUILDING WORK

To remove remains of concrete and cement from floors and tiles, use 1 part of product for 2-10 of water, depending on the degree of scaling.

CLEANING SWIMMING POOLS, FOUNTAINS, BOATS, ETC

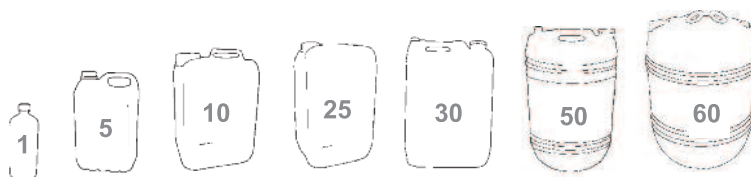
As above.

RUST REMOVER FOR CLEANING METALS

Dilute 1 part of product in 5 of water. Apply to the metal with a brush. Rinse and dry and protect with our REVI-NOIR anti-rust varnish or with our PAVON rust transformer to prevent further rusting.

Presentation

- 1L in box of 20 uds.
- 5L in box of 4 uds.
- 10L in box of 2 uds.





Product based on a complex and perfectly balanced combination of wetting inorganic acids that are powerful rust inhibitors, especially designed for completely removing products based on limestone or clays in general.

APPLICATIONS

Recommended for use in cleaning:

Mineral substrates in building:

- Tiles. • Exposed brickwork
- Cement floors • Swimming pools • Public fountains • Tiles.
- Natural and artificial stone.

Metallic substrates:

- Coffering plates
- Tools.
- Machinery in building and civil engineering, etc

PROPERTIES

- The wetting agents in its formula reduce surface tension, thus increasing the **reaction speed**.
- Its **corrosion inhibitors** make this product recommendable for cleaning metal tools, facilitating the removal of stains caused by rust and aluminium oxide.
- The product's acidic components **dissolve lime scaling and other elements in general**, removing them in the cleaning and rinsing processes

INSTRUCTIONS OF USE

Can be applied by brush or spray.

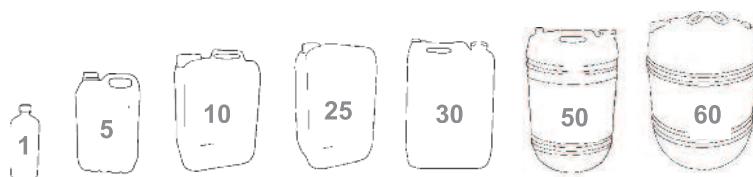
Mix: Depending on the state of the substrate to be treated, it can be used pure or diluted by at most 1:12 in water.

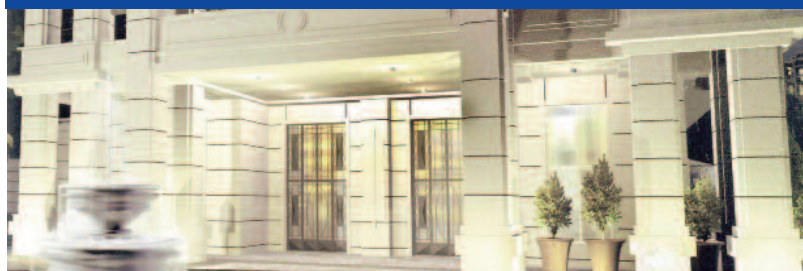
Dilution tests should be carried out to find the optimum level for each situation.

When applied to metallic substrates, these must be fully rinsed with water and dried to prevent further rusting.

Presentation

- 1L in box of 20 uds.
- 5L in box of 4 uds.
- 10L in box of 2 uds.





**Specific cleaner for façades
on all types of buildings.**

APPLICATIONS

Very useful product that greatly helps the cleaning of façades damaged by air pollution.

- Also recommended for removing lime scale and blooming caused by changes in weather, humidity, etc.
- LESFAL is also effective for cleaning slate, stone and artificial stone.

PROPERTIES

- **Has a high detergent power** - low-foam cleaner.
- **Causes no perceptible erosion in façades** despite its acid reaction.
- **Removes all types of lime scales, smoke, soot and all types of dirt caused by air pollution.**
- **Gives buildings a totally renovated appearance.**
- **Does not leave open surface pores so that dirt does not re-accumulate and blooming does not easily occur.**
- **Provides a fine protective film** with salty properties that prevents new environmental attacks, **thus prolonging the time for which the cleaning is effective.**

INSTRUCTIONS OF USE

Can be applied by brush or spray.

The product must be diluted, in a proportion that depends on the amount of dirt on the surface.

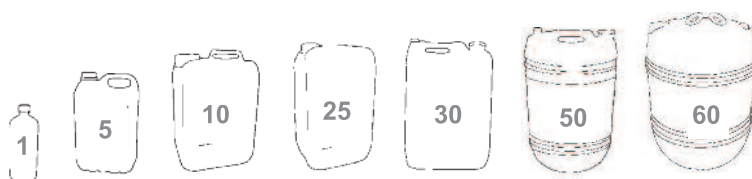
On delicate surfaces, a resistance test should be carried out before starting the treatment.

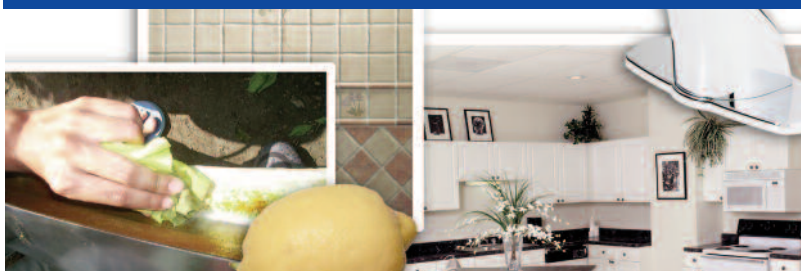
COVERAGE

Dilution ranges from 1 part of product for 3 of water to 1 part of product for 5 of water.

Presentation

- 1L in box of 20 uds.
- 5L in box of 4 uds.
- 10L in box of 2 uds.





Effective cleaner with the natural power of lemon.
A mix of organic acids, wetting agents and grease solvents that make it the ideal product for de-scaling, removing rust and de-greasing any type of surface.

APPLICATIONS

Xitol is a powerful **three in one total cleaner** with many uses:

- De-scaling lime from clay and ceramic floors in general, natural and artificial stone and other porous surfaces, both interior and exterior.
- Removing oxide from all types of metal such as iron, aluminium, steel, etc.
- De-greasing and cleaning floors, sanitary ware, taps, ceramics in kitchens and bathrooms, etc.
- Ideal for cleaning joints between tiles, both horizontal and vertical, because of its viscous texture.

PROPERTIES

- **Has excellent penetration power**, wetting any surface.
- **De-scales, removes rust and de-greases in a single application**; it is not necessary to complement it with other chemical products.
- **Pleasant lemon smell.**
- **Has great thixotropic power**, that is, it does not run on vertical surfaces.
- **The surface from which rust has been removed remains rust-free for a long time**, without any additional treatment.

INSTRUCTIONS OF USE

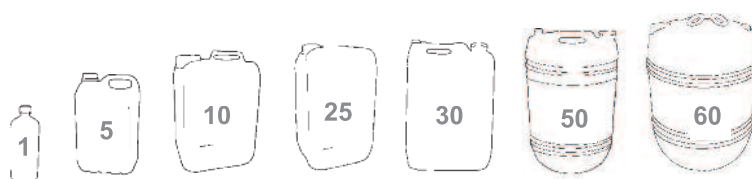
The product is used differently depending on the application.

It can be applied by spray, brush or immersion.

- **Scale remover:** Depending on the degree of scaling on the surface, it can be used pure or diluted in up to 10 parts of water.
- **Rust remover:** Depending on the degree of oxidation and its age and the quality of the metal, it can be used pure or diluted in up to 3 parts of water; the surface must be dried thoroughly to prevent further rusting.
- **De-greaser:** Can be diluted in up to 10 parts of water, depending on the amount of dirt.
 In all cases, the surface must be rinsed thoroughly with water.

Presentation

- 1L in box of 20 uds.
- 5L in box of 4 uds.
- 10L in box of 2 uds.



REVI-MOSS

ELIMINATOR OF SPOTS
IN WET SURFACES



Cationic formula with persistent cleaning action and wide range of action against algae, germs and micro-organisms.

APPLICATIONS

- Recommended for removing all types of algae, fungus, moss, mildew, etc, on the surfaces of floors in terraces, gardens, walls, etc.



PROPERTIES

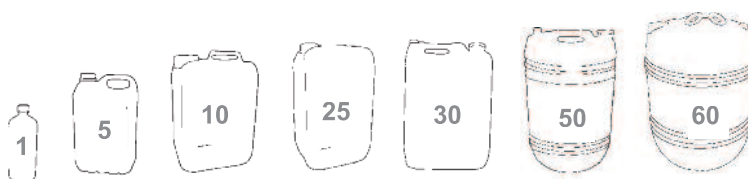
- Product comprising a **solution of quaternary ammonium salts** with excellent chemical stability.
- Its **great power as a wetting agent** allows it to penetrate places that others can't reach will providing a **residual action that guarantees the total elimination of micro-organisms**.
- Because of its cationic nature, it has a **great affinity for bacteria, acting on GRAM+ and GRAM- germs**, even on layers of staphylococcus aureus.
- Soluble in any proportion of water and its effectiveness **is not affected by the water's hardness**.

INSTRUCTIONS OF USE

- The mix depends on the state of the surface and the nature of the micro-organisms: algae, fungus, moss or mildew.
- As a guide, dilution may range from 1 part of product in 10 of water to 1 part of product in 20 of water, always depending on the age and type of the micro-organisms.
- Once diluted, spray the surface, allow it to act for a few minutes and rinse away with water. Allow the surface to dry completely before applying any other type of treatment to it.
- If any micro-organism re-appears once the surface is dry, this is because its roots are deeper and more numerous than thought, in which case a new, stronger application is recommended.

Presentation

- 1L in box of 20 uds.
- 5L in box of 4 uds.
- 10L in box of 2 uds.





This is based on a mix of inorganic acids, dispersal agents, viscosity regulators and rust inhibitors suitable for use on all types of surfaces, both horizontal and vertical.

APPLICATIONS

Used for cleaning and de-scaling swimming pools, common areas, surroundings, etc, allowing the work to be carried out more quickly.

- Very useful for preparing oxidised surfaces before final treatment. Increases the contact time with the surface to be cleaned.
- Very useful in building for cleaning horizontal and vertical surfaces, brickwork, repairs, maintenance, building companies, swimming pool installers, etc.
- Recommended for use for metalwork, metal preparation workshops, bodywork and paint workshops, etc.

PROPERTIES

- Acts by chemical reaction on the surface to which it is applied, removing calcium, magnesium, silicone scales, etc, from the services to which they are adhered.
- When cleaning oxidised surfaces, allows oxide removal preparation before final finish.
- Contains viscosity regulator additives that allow its application on horizontal and vertical surfaces.
- On vertical surfaces, increases the contact time with the surface to be treated, **facilitating the treatment of large surfaces without removing the product.**
- High-performance product that **facilitates cleaning and maintenance of surfaces treated.**

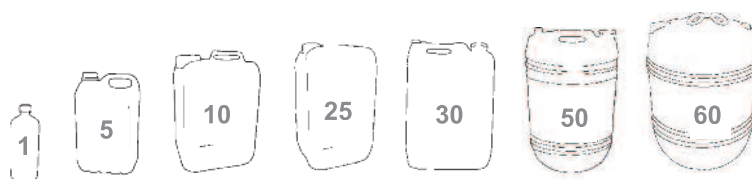
INSTRUCTIONS OF USE

Applied as described on the packaging with a brush, sponge or dampening the surface to be cleaned. Keep in contact for 15 - 30 minutes then wash off with plentiful water. When removing rust, spread the product over the entire surface to be treated. Leave in contact for 10 - 20 minutes then scrub and wash with plentiful water.

When removing salt encrusted on walls and swimming pool surfaces, apply the product, allow it to act, then scrub with a stiff brush, washing finally with plentiful water.

Presentation

- 1L in box of 20 uds.
- 5L in box of 4 uds.
- 10L in box of 2 uds.



PAVISELL

SURFACE SEALANT



APPLICATIONS

- PAVISELL sealant is recommended for sealing concrete, cement, wood, etc, floors in all types of industrial buildings, both new and for general maintenance.



Floor sealant based on an acrylic co-polymer with low molecular weight in a complex combination of charges, pigments and suitable solvents.

PROPERTIES

- Surface sealant that penetrates approximately 3 mm into surfaces, sealing all natural pores in concrete and cement.
- Prevents the penetration of dust, grease, water, etc.
- Compacts the particles in the substrate, leaving them stuck together for greater strength than that of the simple joining by the setting of the cement.
- Gives surfaces greater mechanical resistance to abrasion and wear, preventing the forming of small cracks and splits that serve as the basis for greater erosion.
- Provides great chemical resistance to both acids and alkalis, organic solvents and greases.

INSTRUCTIONS OF USE

The following steps are recommended for a perfect application:

SURFACE PREPARATION

The surface must be totally clean and dry.

The surface must be porous, otherwise treat it with our DESCAL scale remover diluted to a concentration of 5% to 10%.

PRIMING

Apply a first coat of sealant diluted in our solvent:

1 part of product for 2 of solvent, preferably using a woollen roller.

SEALING

A second coat should be applied about half an hour later, undiluted, as thinly as possible, pressing the roller to prevent air bubbles.

SEALANT FINISH

For an optimal result, apply a third finish coat with the product diluted in solvent (3 parts of product for 1 of solvent).

Presentation

- 5 Kg. in box of 4 uds.

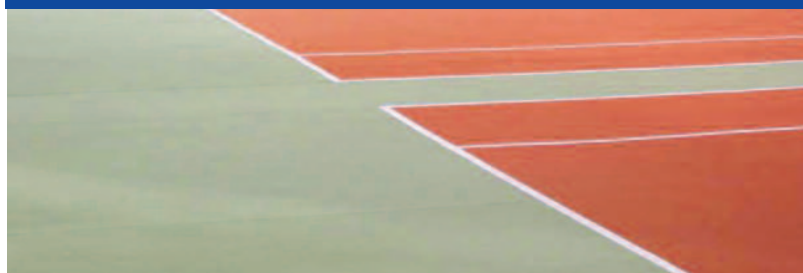


Colors:

Ref. C1006 - BLUE
Ref. C1007 - COLORLESS
Ref. C1008 - GREEN
Ref. C1038 - RED
Ref. C1067 - GREY

PAVISELL-SPORT

SEALANT FOR SPORTS
TRACKS



APPLICATIONS

PAVISELL SPORT sealant is recommended for signposting, painting, decorating, or sealing any sports track, both indoor and outdoor.



Water-based sealant specially designed for treating sports tracks.

PROPERTIES

- Gives surfaces greater resistance to rubbing and wear, thus increasing their life.
- Very good resistance to ultraviolet radiation and heat.
- Provides a non-slip and anti-dazzle surface.
- Optimal balance between flexibility and durability.
- Surfaces are perfectly washable.

● **Does not contain solvents** that are environmentally harmful, cause irritation or risks of inflammation.

● Being water-based, it is easily applied.

COVERAGE

The product's coverage will depend mainly on the porosity of the surface, with an approximate estimated coverage of **4-6 m² per L.**

INSTRUCTIONS OF USE

- The surface must be clean and dry; if there are traces of paint, lime scale, etc, clean it with our DESCAL de-scaler.

If the surface is new concrete, apply an anchoring priming, diluting the product 50% in water. Once the priming is dry, apply a second, undiluted coat; a third, sealing coat may be applied if wished, but this is not necessary.

If re-painting, the anchoring priming is not necessary.

Do not use the sealed track for 2 to 3 days after treatment.

Presentation

- 5 Kg. in box of 4 uds.



Colors:

Ref. C1022 - WHITE
Ref. C1051 - RED
Ref. C1052 - GREEN
Ref. C221005 - BLUE

PAVISELL-PARKING

COATING AND
SIGNPOSTING
FOR CAR PARKS



APPLICATIONS

The exceptional hardness and resistance of PAVISELL-PARKING makes it the ideal coating for treating, covering and signposting all types of floors in car parks, garages, etc.



Acrylic dispersion in water with a very high resin content, especially designed to cover, seal and signpost car parks, whether cement or concrete.

PROPERTIES

- Can be applied both indoors and out.
- High adherence to surfaces.
- Great resistance to wear.
- High flexibility.
- Great resistance to temperature changes.
- Compatible with other water-based acrylic paints.

- Easy re-painting.
- Non-slip and anti-reflection.

COVERAGE

The coverage will depend above all on the state of the surface.

On average, and as a guide, the coverage will be approximately
4-6 m² per L.

INSTRUCTIONS OF USE

Applied using traditional brush or roller instructions.

For an optimal result, follow these instructions:

1. Clean the surface of dust and grease and repair any cracks or splits.

2. Once the surface is repaired and dry, apply a first priming or anchoring coat, diluting the paint with 25% of water; that is, 3 parts of product and 1 of water.

3. When the priming is dry to the touch, apply a second, undiluted coat as supplied in the can.

Once finished, clean all tools with water.

Presentation

- 5 Kg. in box of 4 uds.



Colors:
Ref. C1063 - GREEN
Ref. C1064 - RED
Ref. C1065 - GREY

REVI-FLASH

ROAD SIGNPOSTING PAINT



High quality thermoplastic acrylic coating, resistant to scrapes, wear, abrasion, etc, for use in signposting roads, islands, pedestrian crossings and in garages, car parks, sports centres, etc.

APPLICATIONS

- Roads: vertical and horizontal signposting, islands, changes of direction, etc.
- Reflecting paint with glass micro-spheres finish.
- Signposting in garages, sports centres, stores, workshops, curbs, etc.

PROPERTIES

- **Fast drying**, allowing quick restoration of traffic flow.
- **Great stability against wear and air pollution**, giving it a long life.
- **Drying is by solvent evaporation**, making it independent of weather and humidity.
- **Can be used as reflecting paint by incorporating glass micro-spheres in the finish** in the proportion of 300 - 400 g per kg. of paint.

COVERAGE

1. Signposting of garages: **3 m² per kg.**
2. Signposting of roads: **5 m²/kg.**

INSTRUCTIONS OF USE

1. Signposting of garages, car parks, sports centres, etc: brush or roller is recommended for this application.
2. Signposting of roads: a spraying machine is recommended.

Presentation

- 5 Kg. in box of 4 uds.



Colors:

Ref. C1015 - YELLOW
 Ref. C1033 - WHITE
 Ref. C1066 - GREY
 Ref. C1068 - BLACK
 Ref. C1073 - BLUE
 Ref. C1074 - RED

MV-M 104

GLASS MICRO-SPHERES
(SIGNPOSTING)

Ref. C1044



Microscopically-sized
glass spheres, ideal for
adding
to any type of paint.

APPLICATIONS

Micro-spheres are recommended for giving greater luminosity and refraction to a paint. Ideal for our REVIFLASH paint.



PROPERTIES

- Gives high coverage power to the paint to which it is added.
- Increases the hardness of the paint's finish.
- Gives it high refraction power, thus increasing the luminosity of the paint's finish.

COVERAGE

From 300-400 g per kg. of paint.

INSTRUCTIONS OF USE

The application instructions depends on the finish required:

- The micro-spheres can be added to the paint itself just before application by stirring vigorously. The paint is then applied to the substrate as described on its label.
- The micro-spheres can also be applied straight from the packet by adding them to the freshly-applied paint before it dries so that they stick to it.

Presentation

- 5 Kg. in box of 4 uds.



REVIPARCHE

COLD REPAIRER
OF ASPHALT PAVINGS



Asphalt agglomerate for cold application, especially recommended for quick repairs to pavements and roads.

APPLICATIONS

- Quick repairs of potholes, cracks and unevenness in all types of roads, streets, accesses to estates, garages, etc.
- Allows quick re-opening to traffic.
- Very useful in road repair, building and maintenance companies, local authorities, etc.

PROPERTIES

- For repairing potholes, cracks and unevenness, leaving a finish without joints, **perfectly flat and flexible**.
- **Perfectly matches irregularities in the ground, allowing quick re-opening to traffic.**
- Can be used cold for **quick repairs**.

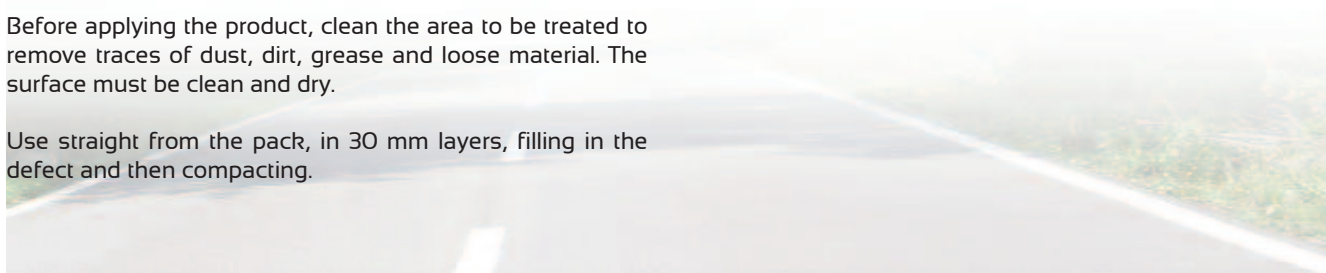
COVERAGE

The coverage is 21 kg per m2 per centimetre deep.

INSTRUCTIONS OF USE

Before applying the product, clean the area to be treated to remove traces of dust, dirt, grease and loose material. The surface must be clean and dry.

Use straight from the pack, in 30 mm layers, filling in the defect and then compacting.



Presentation



PAVIMPRES

PRINTED PAVING SEALER



Decorative sealer of cement, plaster, concrete, etc surfaces. It allows a protection against the action of the dampness, abrasion, traffic of people and resistance to the wear out, maintaining the paving clean of dust and dirt with a permanent shine.

APPLICATIONS

- Specially indicated for the sealing of printed paving.
- Prevents the wear out by rubbing of the paving.
- Improves the cleaning avoiding the soiling of the paving.
- It is very useful in all types of building, maintenance of facilities, rehabilitation, etc companies.

PROPERTIES

- Product made by a mixture of acrylic emulsions with special additives.
- Waterproof to the water, it allows the transpiration of the material where it is applied.
- Compatible with the alkalinity of the cement and of the ultraviolet rays and the outdoor.
- Facilitates the cleaning of the surfaces where it is applied, avoiding the formation of dust.
- High resistance to the abrasion.
- Easy to apply and reposition for its maintenance.
- Meets the requirements of the current Legislation on emission of organic compounds volatile, not exceeding the stringent emission limits of 2010.

COVERAGE

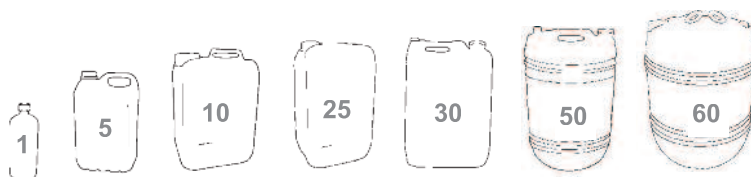
Between 6-8m²/L.

INSTRUCTIONS OF USE

- Before applying the product, clean correctly the floor: eliminates the grease, dust and dirt. Once the surface is clean, apply the product with a roller. Once it is dried the first coat, apply a second once in a crossed way in order to improve the finish.
- Dry time between coats: 30 minutes.
- Maintenance: apply consecutive coats in order to get the shine of the product.

Presentation

- 1L in box of 20 uds.
- 5L in box of 4 uds.
- 10L in box of 2 uds.





Waterproofing for damp walls and concrete surfaces and masonry where great resistance to damp and water is required.

APPLICATIONS

Impermeabilización de todo tipo de superficies de hormigón.

- Reparación de superficies expuestas a cargas hidráulicas en aljibes, depósitos de agua, piscinas, conducciones de agua, etc.
- Protección del agua de lluvia en túneles, sótanos, fosos de ascensores, garajes, etc., impidiendo filtraciones de agua.

PROPERTIES

- **Waterproofs to retain and prevent pressure**, allowing it to support water loads even in completely wet surfaces such as swimming pools, cisterns, tanks, etc.
- **Adheres perfectly to clean, porous and damp surfaces.**
- **Protects concrete and masonry from constant damp, seepages, damp surfaces** etc, providing impermeable substrates of great resistance and durability.
- Comprises a mix of special cements and additives that give it very specific properties.

- **Allows the concrete to transpire**, without yellowing and provides washable surfaces.

- Once set it does not react and is thus **compatible with drinking water.**

COVERAGE

As a surface treatment applied by brush: 1-1.5 kg./m2 with 1 mm thickness.

With the consistency of mortar applied with wool: 2- 3 kg./m2 with 2 mm thickness.

INSTRUCTIONS OF USE

- Before applying REVICEM, the surface must be cleaned of all types of dirt, blooming, fungus, remains of other treatments, etc, to provide a firm adherent base.
- With water courses, seepages, cracks, faults in pipes, etc, repair with REVICEM-P
- Finally, the base must be moistened to saturation while avoiding puddles.
- Mix REVICEM with water to the required consistency,

depending on whether it is to be applied by brush or with wool.

- **Application with brush:** Mix 100 parts of REVICEM with 30- 35 of water and apply as though it were paint using a stiff brush. Apply second coat 24 hours later, brushing crosswise to the first coat.

- **Application with wool:** Mix 100 parts of REVICEM with 20- 25 of water to give the consistency of putty and apply to a thickness no greater than 3 mm. If the waterproofing is to be subjected to constant pressure, apply a second coat crosswise to the first.

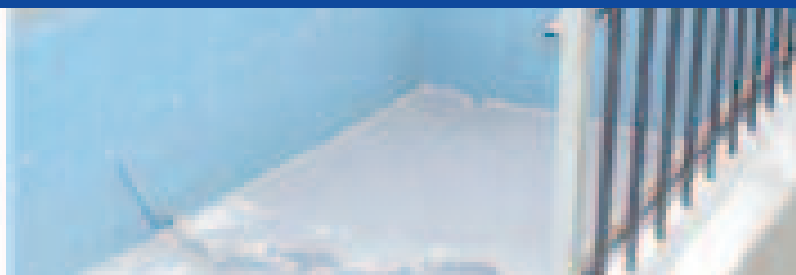
Presentation

- 5 Kg. in box of 4 uds.



REVICEM-P

QUICK SEALANT FOR
WATER COURSES



Quick-setting and expansive hydraulic cement especially designed for repairing water courses and large seepages in floors and walls.

APPLICATIONS

Recommended for app repairs involving serious water leaks or seepages through cracks or holes in concrete, fibre cement, walls, floors, etc.

- For preparing and repairing floors with seepages or damp caused by the pressure of the water.
- For repairing walls, retaining walls, tanks, cisterns, swimming pools, water storage tanks, etc.
- Emergency repairs in tunnels, mines, water courses, conduits, cisterns, basements, apartment garages, lift shafts, etc.

PROPERTIES

- **Mix of special salts and cements, very quick drying** (in a few seconds).
- **Immediately stops leaks and seepages of water under pressure**, since its components react with the damp, accelerating the setting of the cement and forming a permanent plug of material that sticks completely to the surface to which it is applied.
- Quickly gains great structural strength, **allowing it to support permanent water loads under both positive and negative pressure**.
- **Reacts with water and damp**, causing an exothermic chemical reaction that changes the crystalline structure of the cement into a totally impermeable material.
- **Sticks perfectly to porous damp materials such as concrete, mortar, brick, fibre cement, etc**, penetrating the material's pores to form long-lasting chemical bonds.
- Once set, it is inert.

INSTRUCTIONS OF USE

Used by mixing with sufficient water to give a paste and applied by gloved hand, pressing it against the water leak and maintaining the hand pressure for 2 or 3 minutes.

In joints or holes: Open and clean the area well and dampen the surface if necessary, before applying the product as described above.

For general damp: Apply the product by gloved hand spreading it over the area in as thick a layer as possible and wait for a few minutes.

In cracks: Apply the paste from bottom to top until the entire crack is sealed. If water pressure is high, do not

close the entire leak but leave a final drain to relieve the pressure and allow suitable setting.

Once the paste has set, seal the drain in the same way for the final finish.

After this treatment, brush the treated area to remove unset dust.

Check the treated areas for a day to ensure that all the dampness has been eliminated.

Finally, use our REVICEM to waterproof the area, if required.

The product must be mixed just before applying since it sets quickly; otherwise, it will require excess water, causing it to lose adherence and mechanical strength.

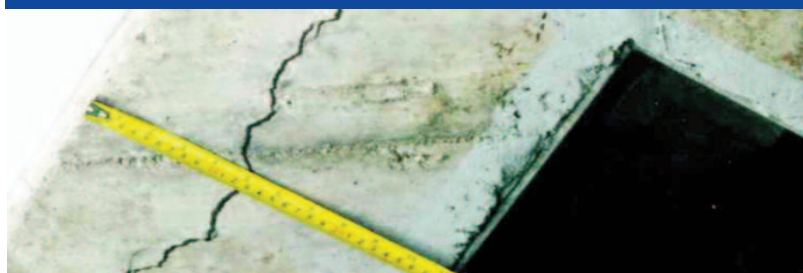
Presentation

- 5 Kg. in box of 4 uds.



REVICEM-REP

QUICK-SETTING THYXOTROPIC
REPAIR MORTAR



Mortar based on cement, selected aggregates and special additives which hardens in a few minutes once mixed with water.

APPLICATIONS

- For repairing peeling and holes in walls.
- Embedding pipes.
- Marking edges before rendering a wall.
- Anchoring screws, metal profiles, wood in masonry walls, etc.

PROPERTIES

- Free of chlorides, so it does not cause iron to rust.
- Sticks perfectly to any traditional support such as ceramics, cement blocks, etc.
- Gives **great cohesion** with minimum losses of material.

- **Does not shrink** in normal working conditions and over reasonable lengths, avoiding the classic cracks that appear in edges or anchorings.

COVERAGE

Depends on the volume to be filled. As a guide: 2 kg. of paste fills 1 litre.

INSTRUCTIONS OF USE

Clean the support.

Mix the product with water in a suitable container. Mix only a little since it will be unworkable within a few minutes; once it has hardened, it must not be re-mixed.

Moisten the surface with which it is to come into contact.

Use the pallet knife used to mix the product or a gloved hand to fill the cavity completely.

Smooth as soon as possible with the pallet knife or grinder.

ANCHORINGS

Use a hammer and chisel to create a suitable cavity in the wall.

Clean the support and mix the product with water in a suitable container.

Partially fill the cavity with paste, insert the metal angle or plug so that it is completely covered by paste and fill the rest of the cavity, smoothing the paste afterwards.

Support the iron for 1 or 2 minutes, and the anchoring is ready.

The anchoring will have achieved sufficient strength for use after 1 hour although it is recommended that it not be subjected to heavy loads until the next day.

Presentation

- 5 Kg. in box of 4 uds.



REVICEM-R

QUICK-SETTING MORTAR
FOR RENDERING



Complex and perfectly-balanced mix of modified cements and selected aggregates which, mixed with water, forms an ideal mortar for rendering all types of walls.

APPLICATIONS

Recommended for rendering façades or partitions, patios, bathrooms, interior walls, etc.

This mortar avoids the inconveniences of rendering with traditional mortars such as the use of sands of unsuitable granularity, incorrect mixes that cause splits and cracks due to shrinkage, the need to thoroughly moisten the support, poor plasticity and the tendency to unstick, etc.

PROPERTIES

- Has great plasticity.
- Total waterproofing against rainwater.
- Excellent adherence to traditional building surfaces.
- Does not form cracks because there is no shrinkage during setting.

- Has good mechanical strength.
- Allows thinner layers than are normally needed (1 cm is sufficient), giving appreciable economy on well-finished walls while its high workability reduces application time.

COVERAGE

Depends on the conditions of the wall and the thickness of the rendering.

As a guide, some 20- 25 kg./m² for renderings 1.5 cm thick.

INSTRUCTIONS OF USE

The support must be clean of dust and other dirt, especially materials that prevent sticking such as greases, oils, remains of paint, etc.

The surface should be slightly rough or textured.

Porous or absorbent surfaces must be moistened when the rendering is applied.

MORTAR PREPARATION

Add the following to the concrete mixer:

WATER 4 litres.

REVICEM-R 25 kg.

WATER As necessary to achieve the required consistency.

INSTRUCTIONS OF APPLICATION

The mixed mortar is spread with wool on the support and left to set.

For thicknesses greater than 1.5 cm, it should be applied in two layers, the first thinner and the second when the first has set (at least one hour, depending on the temperature and humidity).

The mortar maintains its workability and can be applied for up to 1 hour after mixing.

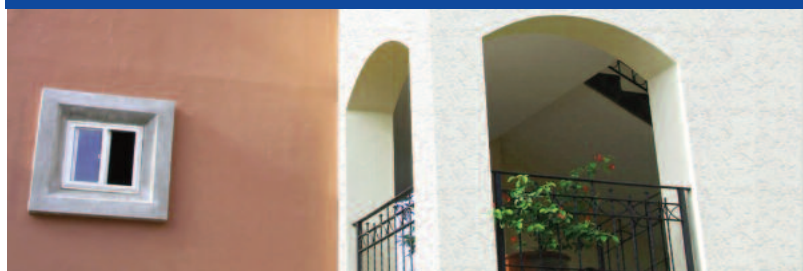
Presentation

- 5 Kg. in box of 4 uds.



REVIPER RUGOSO

TEXTURED STONY EXTERIOR
SURFACE TREATMENT



APPLICATIONS

Given its exceptional hardness, impermeability, adherence and textured finish, it is especially suitable for the exterior protection of all types of buildings.

The ideal product for the rustic decoration of interiors such as hallways, living rooms, passages, stairs, etc.



High quality textured surface treatment based on vinyl co-polymers on a water base with perfectly-selected dispersed aggregate.

PROPERTIES

- High adherence to surfaces.
- Great resistance to wear.
- High impermeability to rainwater.
- Permeable to water vapour.
- Very decorative textured surface.
- Very hard.
- Easily applied with high coverage.

COVERAGE

The coverage will depend on the state of the substrate and type of decoration required.

On average, and as a guide:
1.5 - 2 m² per litre of paste..

INSTRUCTIONS OF USE

For best results, follow these instructions:

Clean the surface of dust and grease, and repair any splits or cracks.

Once repaired, clean and dry the surface and apply the paste undiluted, as supplied in the package.

Can be applied with brush, roller, spatula, comb, etc for different surface effects.

Once applied, immediately clean the tools and any stains or splashes with water.

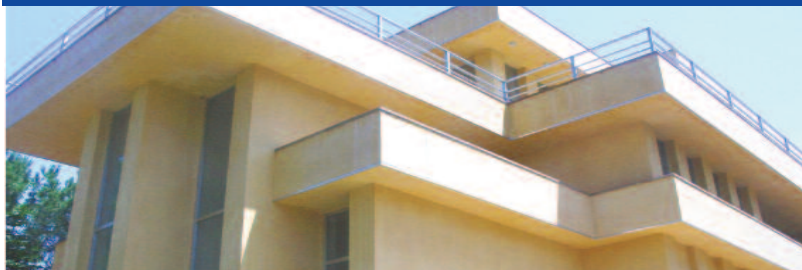
Presentation

- 5 Kg. in box of 4 uds.



REVIPER LISO

SMOOTH STONY EXTERIOR
SURFACE TREATMENT



APPLICATIONS

Given its exceptional hardness, impermeability, adherence and textured finish, it is especially suitable for the exterior protection of all types of buildings.

The ideal product for the decoration of interiors such as hallways, living rooms, passages, stairs, etc.



High quality smooth surface treatment based on vinyl copolymers on a water base in dispersion with pigments, additives and perfectly-selected aggregates for a perfect finish.

PROPERTIES

- High adherence to surfaces.
- Great resistance to wear.
- High impermeability to rainwater.
- Permeable to water vapour.
- Matt, washable finish.
- Easily applied with high coverage.

COVERAGE

The coverage will depend on the state of the substrate and type of decoration required.

On average, and as a guide:
1.5 - 2 m² per litre of paste.

INSTRUCTIONS OF USE

For best results, follow these instructions:

Clean the surface of dust and grease, and repair any splits or cracks.

Once repaired, clean and dry the surface, apply the paste undiluted, as supplied in the package.

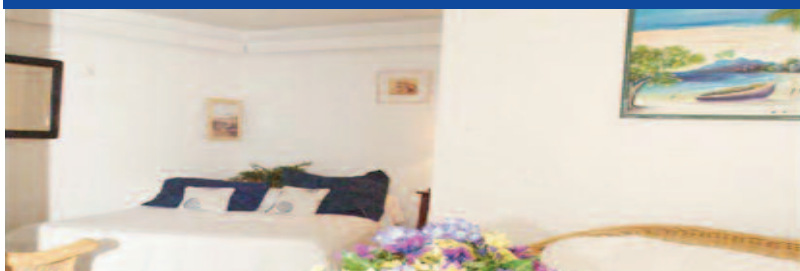
Can be applied with brush, roller, spatula, comb, etc for different surface effects.

Once applied, immediately clean the tools and any stains or splashes with water.

Presentation

- 5 Kg. in box of 4 uds.





APPLICATIONS

This decorative paint is recommended for protecting and decorating interior walls in all types of premises and homes.



Decorative paint
for all types
of interior walls.

PROPERTIES

- Excellent adherence, even on difficult walls.
- Fully washable.
- Since it is a water-based paint, it is easily applied.
- Fast drying.

COVERAGE

The coverage will depend on the state of the surface.

As a guide: priming plus finish, undiluted, approximately:
1 kg. of product for each 4 m².

INSTRUCTIONS OF USE

" STIR VIGOROUSLY BEFORE USE "

Apply with roller, touching up with a brush.

- On new surfaces: Apply a first primer coat as an anchor, diluted in 30% water, wait until the surface is fully dry, and apply a second coat, either undiluted or diluted in 10% water.

- On damaged surfaces: prepare the wall by scraping the surface to remove remains of paint, and apply as above, but with a primer diluted with 20% water.

- On surfaces that are not new but are undamaged, apply as for new surfaces.

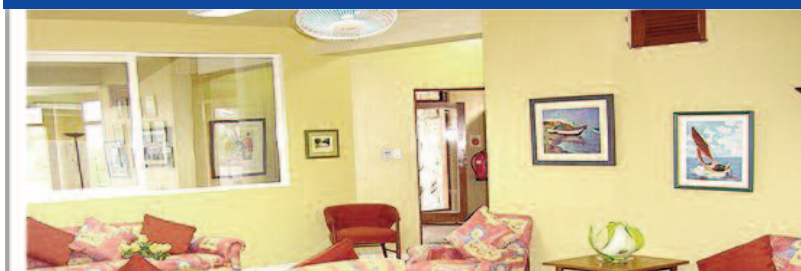
Presentation

- 5 Kg. in box of 4 uds.



REVIMTER-M

HIGHLY DECORATIVE MATT INTERIOR
SURFACE TREATMENT



APPLICATIONS

This product is recommended for protecting and decorating interior walls in all types of premises and homes.



Highly decorative matt
surface treatment for all
types of interior walls, with
first quality additives.

PROPERTIES

- Excellent finish.
- Excellent covering power.
- Excellent adherence, even on difficult walls.
- Fully washable.
- Being a water-based product, it is **easily applied**.
- Fast drying.

● Practically odourless.

● Non-flammable.

● Does not yellow.

COVERAGE

The coverage will depend on the state of the surface.

As a guide: Has a coverage of approximately **8 m²/ kg. of product for each coat**.

INSTRUCTIONS OF USE

" STIR VIGOROUSLY BEFORE USE ".

Apply with roller, touching up with a brush.

- On new surfaces: Apply a first primer coat as an anchor, diluted in 50% in water, wait until the surface is fully dry, and apply a second coat, either undiluted or diluted in 10% of water.

- On damaged surfaces: prepare the wall by scraping the surface to remove remains of paint, and apply as above, but priming using 25% of water.

- On surfaces that are not new but are undamaged, apply as for new surfaces.

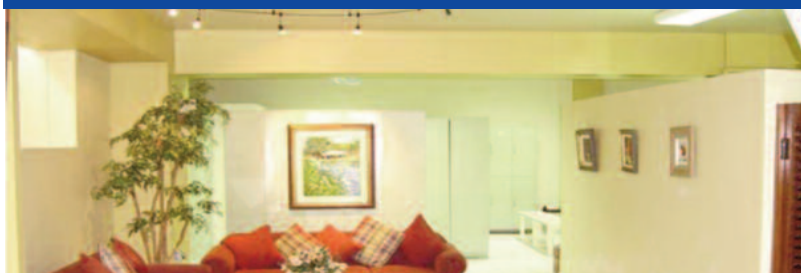
Presentation

- 5 Kg. in box of 4 uds.



REVIMTER-S

SATIN FINISH DECORATIVE SURFACE
TREATMENT FOR INTERIORS



APPLICATIONS

This product is recommended for protecting and decorating all types of walls in any premises or home, whether commercial and domestic or industrial.



Highly decorative satin finish
surface treatment for interiors,
with first quality additives

PROPERTIES

- Excellent finish.
- Excellent covering power.
- Excellent adherence, even on difficult walls.
- Fully washable.
- Being a water-based product, it is **easily applied**.
- Fast drying.

● Practically odourless.

● Non-flammable.

● Does not yellow.

COVERAGE

The coverage will depend on the state of the surface; as a guide, the average would be **6-8 m²/ kg. of product per coat**.

INSTRUCTIONS OF USE

" STIR VIGOROUSLY BEFORE USE "

A roller is recommended for application, touching up with a brush.

- On new surfaces: apply a first coat of priming or anchoring with the paint diluted in 50% water. Wait until fully dry and apply a second coat either undiluted or diluted with 10% water.

- On old or damaged surfaces: prepare the wall by scraping the surface to remove remains of paint and apply as above, but with the primer diluted in 20% of water.

- On surfaces that are not new but are undamaged, apply as for new surfaces.

Presentation

- 5 Kg. in box of 4 uds.



RETROC-S

WATER REPELLENT
FOR DRY AREAS



Specifically designed to prevent the appearance of damp on all types of surfaces, thus preventing damage, stains, blooming and all types of damage caused by damp.

APPLICATIONS

- Exterior: for all types of building where water repellent protection is needed against bad weather: apartment blocks, offices, historic buildings, etc.
- Interiors: in all types of industries or stores where protection is needed against dampness from the manufacturing process itself, thus preventing the appearance of mould, fungus, etc; for example, meat stores, canning industries, milk treatment plants, conserved meat drying plants, etc.
- Can be applied to concrete, fibre cement, terracotta, plaster, stone, etc.

PROPERTIES

- Prevents water from penetrating the network of pores and capillaries in normal building materials.
- Allows walls to breathe, does not cause water or carbon dioxide retention.
- Dries quickly on all neutral or alkaline surfaces.
- Beading appears within approximately 2 hours.
- Has notable resistance to ageing materials: UV radiation and freezing/melting cycles.

- If required, can be painted over.

- Prevents the growth of micro-organisms found in humid atmospheres.

COVERAGE

Retroc-S provides an approximate coverage of **2-3 m² per litre of product**, depending on the porosity of the surface.

INSTRUCTIONS OF USE

- For best results, follow these instructions:

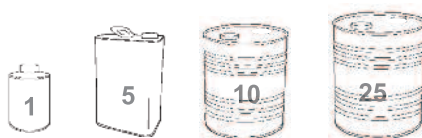
1. Remove loose pieces, clean or brush, for which we recommend our DESCAL scale remover.

2. Apply the product straight from the pack, by roller, brush or spray gun.

3. It is important to ensure that the surface is saturated with the product. Generally, a single coat is sufficient, but on very porous surfaces a second coat should be applied once the first coat has lost its shiny appearance.

Presentation

- 1 Kg. in box of 12 uds.
- 5 Kg. in box of 4 uds.
- 10 Kg. in box of 2 uds.



RETROC-H

WATER REPELLENT
FOR DAMP AREAS



Highly effective water repellent for surfaces in when drying would take too long.

APPLICATIONS

Recommended for use as a water repellent on building and civil engineering materials such as cement, plaster, baked clay, natural stone, artificial stone, tiles, bricks, etc.

- Preferably in all areas where drying the surface for treatment would take too long.
- Can also be applied to dry surfaces.

PROPERTIES

- Protects against problems caused by damp and air pollution.
- Has a high degree of penetration in the surface, creating a high quality water repellent barrier.
- Conserves the material's porosity, allowing it to breathe and avoiding the pressure differences caused by perforations in the surface treatment
- Because it repels damp, it prevents the appearance of fungus and blooming.
- The treated surfaces can be treated.

- Prevents chemical damage caused by acid rain in towns or industrial areas.

- Its heat insulation coefficient is unaffected by humidity.

COVERAGE

- The covering power of our RETROC-H water repellent will depend on the state of the surface and the degree of waterproofing required.
- As a guide, approximately 3 to 4 m² can be treated per litre.

INSTRUCTIONS OF USE

Used as supplied, without dilution.

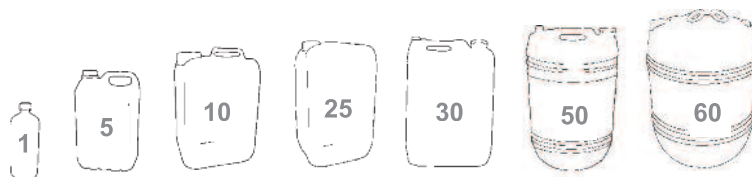
Can be applied by roller, brush or spray gun, spreading the product until the surface is totally saturated with it.

When the surface is very porous, a second coat should be applied before the first is completely dry.

Beading (water repelling) will start to appear approximately 24 hours after application, although it will not reach its full effectiveness for a week after treatment.

Presentation

- 1L in box of 20 uds.
- 5L in box of 4 uds.
- 10L in box of 2 uds.



RETROC-MAX

CONCENTRATED
WATER REPELLENT



APPLICATIONS

Recommended for use as a water repellent on general building materials such as cement, plaster, baked clay, natural stone, artificial stone, tiles, bricks, etc.

- To protect constructions against all problems caused by damp and air pollution.
- Beading is fully effective in 48 hours.



Highly effective water repellent for surfaces with problems caused by damp.

Highly concentrated water repellent materials that give the product a high coverage.

PROPERTIES

- It **very economical** because of its great coverage, since it can be applied highly diluted in water.
- **Has a high degree of penetration** in the surface, creating a high quality water repellent barrier.
- **Conserves the material's porosity**, allowing it to breathe, and avoiding the pressure differences caused by perforations in the surface treatment.
- Because it repels damp, **it prevents the appearance of fungus and blooming**.

- **The treated surfaces can be treated perfectly.**

- **Prevents chemical damage caused by acid rain** in towns or industrial areas.

- Its heat insulation coefficient is unaffected by humidity.

COVERAGE

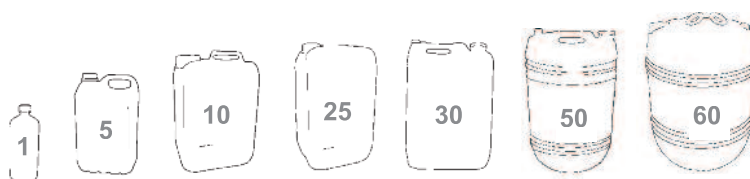
- The covering power of our RETROC-MAX water repellent will depend on the state of the surface and the degree of waterproofing required.
- As a guide, once diluted, **30 to 40 m² can be treated per litre**.

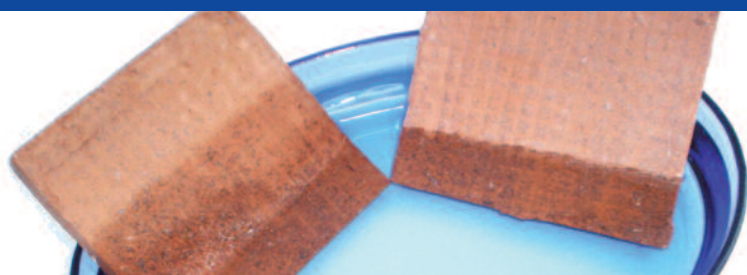
INSTRUCTIONS OF USE

- Used diluted in 7-10% water to waterproof both vertical and horizontal surfaces.
- To waterproof mortar, add undiluted to the water in the mix in the proportion of 4% by weight of cement. Once the wall is ready, apply as in the above case.
- To waterproof plaster, add to the water in the mix in the proportion of 8% of the weight of the plaster.
- Can be applied by roller, brush or spray gun, spreading the product until the surface is totally saturated with it.
- When the surface is very porous, a second coat should be applied before the first is completely dry.
- Beading (water repelling) will start to be seen once the coat is dry, although it will only reach full effectiveness 48 hours after treating the surface.

Presentation

- 1L in box of 20 uds.
- 5L in box of 4 uds.
- 10L in box of 2 uds.





Water-based micro-molecular inorganic solution based on quartz.

APPLICATIONS

Waterproofing for all types of underground constructions and, generally, all surfaces requiring the product's properties, described below.

Acts partially as a catalyser and as a component in a reaction with the calcium in the surfaces being treated, which must be damp, to form calcium silicate or silicon oxide that appears as totally insoluble crystals and that are deposited in the empty spaces, blocking the pores and capillaries. presenta en forma de cristales totalmente insolubles y que se depositan en los espacios huecos, obturando los poros y los espacios capilares.

PROPERTIES

- The small size of its particles allows the **creation of crystals in the pores and capillaries of the surface.**
- **Forms a horizontal barrier against capillary action in walls.**
- **High water repellent power in ceramic materials.**
- **Regenerates and consolidates porous inorganic materials.**
- **Makes concrete harder.**

- **Protects the surface against acid** above pH = 3.

- **Increases the mechanical strength of mortars and ceramics.**

- **When 4% is added to mortar, it makes it impermeable, increases its plasticity and reduces shrinkage, cracking and setting time.**

- **The support resists the passage of water for pressures of over 3 kg./cm²**

INSTRUCTIONS OF USE

By spray, brush or injection, until the surface is fully saturated.

The surface must be free of dust and grease. Any cracks must be repaired.

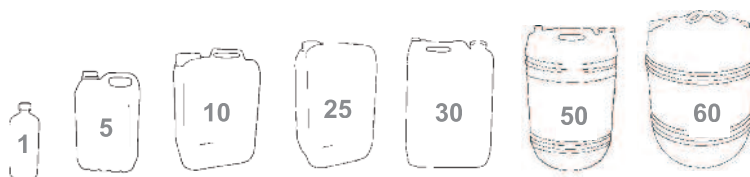
The surface must be moistened with water before treatment.

COVERAGE

The average coverage is **200 to 300 g per m²**, depending on porosity and the type of application.

Presentation

- **1L in box of 20 uds.**
- **5L in box of 4 uds.**
- **10L in box of 2 uds.**





Consists of a mix of fatty solvents with fluorinated polymer resins.

APPLICATIONS

Used to treat and protect porous building materials (terracotta, baked clay, natural stone, marble, concrete, terrazzo, extruded plaster, glazed porcelain, etc), giving the treated surfaces a resistant finish that repels damp, oil, grease, wine, coffee, soft drinks, etc, stains.

- Used to protect building materials, making it very useful for manufacturers of baked clay tiles, terracotta, rustic material, mantelpieces, sculptures, artistic workshops, etc.

PROPERTIES

- Provides **protection against damp, grease, oil, coffee, wine, soft drinks, etc, on porous building services.**
- **Prevents the penetration of damp through capillary action and surface condensation.**
- Protects surfaces from greasy stains, avoiding spots and deterioration of the material.
- Penetrates the capillary system of porous materials, creating a sealing barrier that prevents the penetration of oils and increases.
- **Allows the treated surfaces to breathe.**
- **Quick drying**, allowing treated surfaces to be used within a very short period.
- Allows treated surfaces to be cleaned, preventing spots and scaling from stains on porous materials.
- Does not contain CFC (chlorofluorocarbons), PFOA (perfluorooctanoic acid) or PFOS (perfluorooctanesulfonic acid) nor derivatives.
- Complies with legal requirements for emissions of volatile organic compounds, complying with the strict emissions limits for 2010 (VOCmax 2010: 750 g/l, VOCproduct: 710 g/l).

INSTRUCTIONS OF USE

Applied as described on the packaging with a brush, roller, spray or airless pistol, saturating the surface and applying cross coats. The performance depends on the porosity of the material to be treated: 6-8 m²/l on porous surfaces, 15-20 m²/l on slightly porous surfaces.

The drying time is very short, less than one minute, depending on the porosity of the surface.

Use spirit-based solvents to clean the tools.

Do not apply when rain is threatened, with high environmental humidity or when there is condensation on or in the surface.

Presentation

- 1 Kg. in box of 12 uds.
- 5 Kg. in box of 4 uds.
- 10 Kg. in box of 2 uds.





Thyxtrophic two-part adhesive, pre-mixed, idea for joining new concrete with cured concrete, wood, glass, marble, steel, and other substrates, and for joining cured concretes together and for occasional repairs to concrete.

APPLICATIONS

UNIPOX, our building adhesive, is ideal product for joining mortars and concretes.

It joins iron with concrete, new concrete with cured concrete, cured concretes together, and is recommended for occasional repairs in building, joining concrete with other materials, etc.

The joint obtained with UNIPOX is total, long-lasting and completely stable.

PROPERTIES

- Does not contain solvents.
- Great resistance to scraping and abrasion.
- Application valid for various substrate thicknesses.
- Does not shrink.
- Great resistance to chemical products (acids, diluted bases, oils, salt solutions, etc).
- Thyxtrophic consistency: **easy to apply, without drips on vertical surfaces**, while filling gaps.
- Prevents the penetration of water.

INSTRUCTIONS OF USE

1. Surface preparation

The concrete must be clean and free of dust. It must be dry or damp but never wet.

Do not mix more product than will be used during 1 hour.

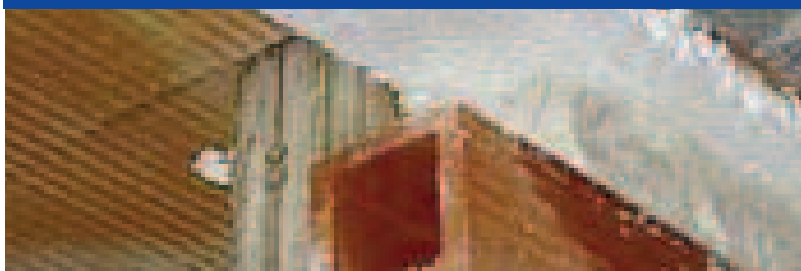
2. Prepare the components separately then mix them, by hand or mechanically, for at least 3 minutes.

3. Use a spatula or brush to apply evenly to the surface.

Presentation

- 1 Kg. in box of 16 uds.
- 5 Kg. in box of 4 uds.





An adhesive especially recommended for solving adherence problems between different building materials and those with very smooth and low porosity surfaces.

APPLICATIONS

- Used to improve joints between old and new concrete, mortars with plaster, concrete of different ages, joints of partitions and pillars, etc.
- Also used in joints in concrete paving, slabs, raised surfaces, etc, increasing the adherence of the underlying support and improving its mechanical properties (elasticity).
- Facilitates work and installation without the need for scraping the concrete or mortar before anchoring the new repair layer, reducing labour costs.
- Very useful in all types of building companies, quick repair contracts, masonry in general, building maintenance, etc.

PROPERTIES

- Forms transparent, very adherent and flexible films.
- Its adhesive properties remain unalterable 24 hours after application.
- Can be applied on damp or dry surfaces.
- No need to scrape concrete or mortar.

COVERAGE

The coverage depends on the porosity of the support and is about 6 - 8 m² per litre.

INSTRUCTIONS OF USE

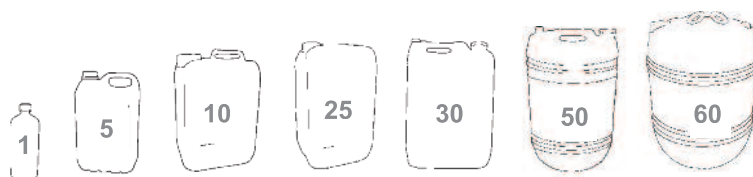
Before applying the product, clean the area with pressurised water, removing traces of dust, dirt, loose material, paint, etc.

The product is applied straight from the pack (undiluted).

For other applications, see the technical report.

Presentation

- 1L in box of 20 uds.
- 5L in box of 4 uds.
- 10L in box of 2 uds.



REVI-POX

GENERAL PURPOSE EPOXY ADHESIVE.

Presentation
tube 352 ml.



Double thixotropic component system packed in tubes for easy application, consisting of a mix of epoxy resins with selected mineral loads to regulate viscosity and special additives for use as a general adhesive, for joining old and new concrete and for general repairs.

APPLICATIONS

For use as an adhesive for strong joints in building materials such as new and old concrete, wood, glass, marble, steel, etc.

- Allows joining of same or different materials (concrete to concrete, concrete to iron, concrete to wood, aluminium, glass, marble, etc).
- Can be applied to dry and slightly damp surfaces.

PROPERTIES

- Thixotropic consistency for easy application without running on vertical surfaces while filling hollows.
- Once hard, gives treated surfaces with great resistance to wear and abrasion.
- Can be applied in various thicknesses to join different materials.
- Does not shrink.
- No contact with the product required. Both components are mixed in the mixing nozzle provided with the tube, facilitating quick applications on site. The mixer ensures perfect proportions and mixing.
- Used cartridges can be used several times until completely used up without wasting the mix, simply by fitting the internal plugs.
- Allows different materials to be joined by injection followed by anchoring or by joining together. The resulting joints are waterproof.
- Gives treated surfaces great resistance to chemical products (acids, diluted bases, oils, salty solutions, etc).

INSTRUCTIONS OF USE

The product must be applied in the Tubi-gum special pistol for double tubes.

Before inserting the tube in the pistol, unscrew the cap at the end of the tube and remove the two inner pressure caps. Thread the mixer tube and fit the tube into the pistol with the cartridge between the pistons.

Eject an amount of paste equal to the length of the mixer to ensure good mixing when applied. Operate the pistol to apply the amount required.

Once the job is finished, remove the tube and mixer and scrap them. Fit the inner caps to preserve the cartridge for further use.

Apply to surfaces that are clean of dust, grease and dirt. Once the product has been mixed, the application time is 1 to 1:30 hours at 20 °C. For other working temperatures, see the table below. During this time, the product can be handled without its hardening. At the end of this time, allow it to rest using light pressure to keep the materials together. The product develops its full strength 24 hours after being applied.

Once the job is finished, remove the tube and mixer and scrap them. Fit the inner caps to preserve the cartridge for further use.

REVI-FIX

EPOXY ADHESIVE FOR QUICK ANCHORING

Presentation
tube 480 ml.



Double component system packed in tubes for easy application, consisting of a mix of epoxy resins with selected mineral loads to regulate viscosity and hardening additives with highly controlled speeds.

APPLICATIONS

Can be applied to hollow and solid surfaces of concrete, natural and artificial stone, difficult fixings of metal structures, studs, anchorings, sanitary equipment fitting, electrical panels, grilles, street furniture, lift rails, canopies, lights, etc.

Used for quick anchoring of bolts, studs, fixing metal structures, in solid or hollow materials, dividers, concrete or any type of material. Can be used with threaded rods, corrugated reinforcing and other fixing elements.

PROPERTIES

- **Very quick hardening**, allowing very quick repairs and return to operation.
- **Sticks to a great variety of supports and materials:** concrete to concrete, iron to concrete, glass to concrete, etc.
- No contact with the product required. Both components are mixed in the mixing nozzle provided with the tube, facilitating quick applications on site. The mixer ensures perfect proportions and mixing.
- **Used cartridges can be used several times until completely used up without wasting the mix, simply by fitting the internal plugs.**
- Once hardened, the adhesive forms a solid wedge in the base material for high mechanical strength.
- Allows different materials to be joined by injection followed by anchoring or by joining together.
- **Withstands vibration perfectly.**

INSTRUCTIONS OF USE

The product must be applied in the Tubi-gum special pistol for double tubes.

Before inserting the tube in the pistol, unscrew the cap at the end of the tube and remove the two inner pressure caps. Thread the mixer tube and fit the tube into the pistol with the cartridge between the pistons.

Eject an amount of paste equal to the length of the mixer to ensure good mixing when applied. Operate the pistol to apply the amount required.

Injection in solid materials Drill as necessary. Clean the inside by blowing to remove remains of dust and loose material. Inject the product from the outside. Insert the fixing piece, turning it at the same time. Wait for the setting time before use.

Injection in solid materials Drill as necessary. Insert a screen into the hole then inject 2-3 shots with the pistol from the inside out. Insert the fixing piece, turning it at the same time. Wait for the setting time before use.

Once the job is finished, remove the tube and mixer and scrap them. Fit the inner caps to preserve the cartridge for further use.

DESCOFRAN

STRIPPER FOR IRON AND WOOD



Water-soluble liquid especially designed to prevent concrete from sticking to the surface of moulds and coffering without altering its appearance or properties.

APPLICATIONS

Has a wide range of applications, such as:

- Coffering companies.
- Pre-stressed concrete manufacturers.
- Building machinery companies.
- Builders, etc.

PROPERTIES

- Made from a complex and totally balanced mix of mineral oils and anti-oxidising, **anti-rust and emulsion agents**.
- Forms an emulsion in water over a wide concentration range.
- The emulsion in water acquires great viscosity that allows it to stick perfectly to the surface, even in vertical moulds.
- Does not oxidise metal surfaces.

• Facilitates removal from the mould, improves the finish of coffered surfaces, avoiding defective edges.

• Increases mould life, reduces labour costs and the time taken for removal from mould.

COVERAGE

- In iron coffering: **170-190 m² per litre**.
- In wooden coffering: **110-130 m² per litre**.

INSTRUCTIONS OF USE

The coffering moulds must be dry and free of all dirt.

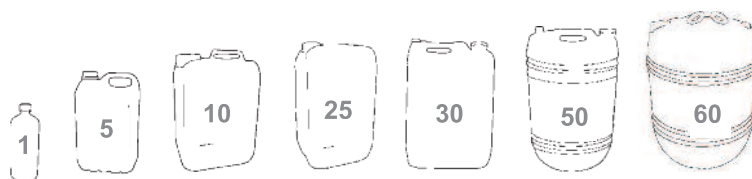
If the moulds are rusty or have remains of cement, we recommend using our DESCAL scale remover.

The stripper can be applied by brush or spray, undiluted, as supplied, or diluted in up to 10 parts of water.

The concentration of the emulsion will depend on the work being carried out. We recommend making tests to obtain the optimal mould removal with minimum product use.

Presentation

- 1L in box of 20 uds.
- 5L in box of 4 uds.
- 10L in box of 2 uds.



TUBEFON

DRAIN UNBLOCKER



Powerful drain unblocker that acts by chemical reaction against dirt, removing accumulated organic material that causes blockages.

APPLICATIONS

We recommend using our TUBEFON drains unblocker whenever it is necessary to remove organic and inorganic remains causing scaling or blockages in the drains in wash basins, toilets, showers, baths, sinks, kitchens, etc.

PROPERTIES

- **Reacts chemically** against organic wastes that accumulate in elbows and joints in pipes, such as **soap, hair, toilet paper, cotton, bandages, cigarette stubs, etc.**
- **Highly concentrated product**, acts even against the most complex blockages.

- **Quickly and radically attacks organic material of animal origin.**
- Contains corrosion inhibitors.

INSTRUCTIONS OF USE

For an optimal result, follow these steps:

- Leave the minimum amount of water in the drain.
- Add the product to the drain slowly, always avoiding splashing.

Recommended mix:

TOILETS..... litre.

WASH BASINS, etc 100 - 300 cc.

- Allow the product to act for at least 5 minutes then wash away very slowly with cold water.
- After a few minutes, add plentiful water until it flows freely.
- If the blockage is difficult, repeat the treatment as often as necessary.
- For preventive treatments, use half the dose recommended above.

Presentation

- 1 Kg. in box of 24 uds.
- 2 Kg. in box of 12 uds.
- 8 Kg. in box of 4 uds.





**This product is
specially designed
for treating
rusty iron surfaces.**

APPLICATIONS

PAVON covers a wide range of applications. As a rust transformer it can be used in all industries that use or work with iron, such as, for example, ship building, the automobile industry, maintenance, building (for treating fences, windows, tools, etc), do-it-yourself, etc.

PROPERTIES

- **Does not require extensive sandpapering**, although the best results are obtained by removing the remains of paint, scale, residues and greases so that it can react directly with the rust.
- Surfaces are left ready for painting or lacquering. **Painting can be avoided** by applying a second coat of product.
- **Does not freeze.**

- **Does not contain inflammable or volatile solvents.**
- **High coverage.**

COVERAGE

15 - 20 m²/l depending on the temperature.

INSTRUCTIONS OF USE

"STIR BEFORE USE"

Apply with brush, roller or spray.
Should not be diluted.

Surfaces with remains of paint and old rust: Scrape the surface to facilitate penetration by the product and apply a first coat.

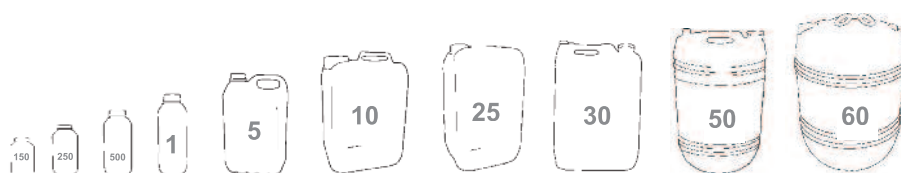
Surfaces impregnated with calamines: Sand blast for a perfect application and apply one coat of product.

Surfaces with little rust: Brush off the loose dust and apply one coat of product.

- Approximate drying time: 2 hours. Do not apply paint or a second coat until this time has elapsed.
- Clean tools with water immediately after use.

Presentation

- 1L in box of 12 uds.
- 5L in box of 4 uds.
- 10L in box of 2 uds.



RUSTISAN

WET EFFECT TREATMENT
FOR RUSTIC AND CLAY PAVING



Creates and maintains a wet effect on paving of clay, terracotta, Catalan tiles, and in general, ceramics with a porous finish, moistening them and protecting them against damp and daily use.

APPLICATIONS

This product is recommended for treating clay, terracotta and ceramic paving with porous finishes to protect them against stains from damp and daily use.

Its regular use creates a wet effect, giving floors that recently-cleaned look and creating a welcoming air with a very agreeable fresh smell.

PROPERTIES

- Has a balanced and perfect water repelling action, **without leaving traces when applied.**
- **High penetrating power**, sealing the pores in clay and ceramics generally, protecting floors from damp and deterioration through daily use.
- Preserves the appearance of the clay, **highlights its beauty** and creates a welcoming air with a **very agreeable fresh smell.**

- Its regular use keeps the new look of clay floors and **delays ageing.**

COVERAGE

Depends on the surface porosity and the required effect. As a guide: 1 litre of product for each **15-20 m² of surface for shock treatment.**

INSTRUCTIONS OF USE

SHOCK TREATMENT

1. Clean and de-scale with our DESCAL special scale remover for clay, thoroughly rinse and allow to dry completely.
2. Dilute 50% in water and apply a first coat with a mop or roller, previously moistened in water.
3. Apply the second coat with undiluted product. The matt wet effect will appear immediately.

For a satin finish, apply a third coat of undiluted product, pressing firmly while applying.

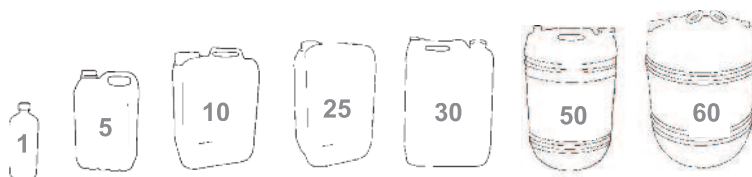
Dries immediately; it can be walked on after 15 minutes, although it is preferable to wait for 1- 2 hours.

MAINTENANCE

To maintain the appearance obtained with the shock treatment, add 15 to 20 cc. to each bucket of water and clean the floor as usual.

Presentation

- 1L in box of 20 uds.
- 5L in box of 4 uds.
- 10L in box of 2 uds.





High quality acrylic
thermoplastic coating that
resists scratching, wear,
abrasion, etc, ideal for
sealing joints in horizontal
paving.

APPLICATIONS

Recommended for sealing, water-
proofing and decorating joints in
clay tiles and floors in general. Its
colour highlights the joints for a rus-
tic appearance.

PROPERTIES

- Decorates and highlights joints.
- Waterproofs and prevents dust and stains.
- Fast drying, allowing quick restoration of traffic flow.
- Great stability against wear and air pollution, giving it a long life.

- Drying is by solvent evaporation, making it independent of the weather and damp.

COVERAGE

5-6 m²/Kg. of product.

INSTRUCTIONS OF USE

" STIR VIGOROUSLY BEFORE USE ".

Clean and dry the surface, removing remains of paint, grease, dust, etc.

Apply with a brush or foam roller, taking care not to stain the rest of the paving. We recommend protecting the tiles with masking tape. Clean any splashes with solvent immediately.

Apply in thin coats; as many coats can be applied as are needed to fill the joint completely.

Drying takes 2-4 hours, but it should not be walked on for 24 hours

Presentation

- 1 Kg. in box of 12 uds.
- 5 Kg. in box of 4 uds.





**Agente limpiador del Graffiti,
formulado a base de
tensioactivos, aditivos
tixotrópicos y disolventes
especiales para tal fin.**

APPLICATIONS

Recommended for cleaning up graffiti in:

- Schools, colleges, local authorities, large companies, public places, etc.
- In general anywhere where there are horizontal or vertical painted surfaces.
- Also recommended for use in wood, furniture, aluminium, etc, factories to remove adhesives, sealants, scratches, etc.

PROPERTIES

- Non-abrasive; removes paint and scratches without damaging the surface.
- Acts in situ due to its dispersants and wetting agents.
- Forms an unstable milky white emulsion with water, so it can be rinsed away with a simple water jet.
- Non-flammable.

INSTRUCTIONS OF USE

"STIR BEFORE USE".

Use as supplied, without diluting.

Can be applied with a brush or cloth: apply with brush, cloth or sponge, wiping with circular movements over the surface. The paint, scratch or sealant will disappear in a few seconds.

Remove the remains of the product with a water spray.

Presentation

- 1 Kg. in box of 12 uds.
- 5 Kg. in box of 4 uds.
- 10 Kg. in box of 2 uds.



FILTER

ANTI-GRAFFITI SEALANT



APPLICATIONS

Our SEALANT FILTER is recommended for sealing concrete, cement, wood, etc surfaces anywhere where easy maintenance against graffiti is required.

If the surface has been painted, the paint will disappear immediately when wiped with a cloth or sponge soaked in our GRACIL CLEANER.



Surface sealant based on an acrylic co-polymer of low molecular weight in organic solvents with special additives that increase resistance to scratching and graffiti.

PROPERTIES

- Penetrates approximately 3 mm into the surface, sealing the natural pores in concrete, cement, etc.
- Prevents the penetration of: paint, scratches, dust, greases, water, etc.
- Provides great chemical resistance to acids, alkalis, organic solvents, etc.
- Gives surfaces greater resistance to rubbing and wear, preventing the forming of small cracks and splits that serve as the base for greater damage.

COVERAGE

Depends on the surface porosity: on average **3 m² per litro** in two coats.

INSTRUCTIONS OF USE

"STIR VIGOROUSLY BEFORE USE".

The surface must be completely clean and dry.

Apply a first coat as a primer, preferably by roller.

A second coat should be applied half an hour after the first to seal the surface completely.

Treatment should be made with thin, even coats to prevent trapping air which would later cause defects and possible blisters in the finish.

Presentation

- 5 Kg. in box of 4 uds.





APPLICATIONS

Is useful in sheet metal workshops and painting, electrical appliances factories, furniture, shipbuilding, shipping, warehouses maintenance of hotels, etc.



Special flux for the Elimination of all forms of paintings, both synthetic and the oil on wooden surfaces or metal where their impairment not you can paint on top and should delete original layer before make a new treatment or implement a new primer.

PROPERTIES

- Complex mixture of powerful solvents with agents moisturizers that they provide characteristics suitable to be applied on all kinds of surfaces, both vertical and horizontal.
- The treated surface can be painted again once it is dry.
- It contains moisturizers additives that provide you with a high capacity of penetration in all types of surfaces to facilitate the detachment of the painting.
- It removes stains of salts, oxides, varnishes and resins of metallic surfaces, without causing attacks to these elements.
- Very effective in the elimination of varnishes in the cases which require a change of tone or hue of the wood.

INSTRUCTIONS OF USE

For optimal results recommended the following steps:

- Spread a layer on the surface by brush or roller.
- Stop passing from 5 to 10 minutes for the product act. This past time appear bags and cracking of the painting.
- In certain types of will be necessary to apply a second layer of product for finish remove the layers of back-ground.
- Once cracked paint, apply a damp brush or pressurized water to separate entirely from the media.
- The speed of reaction of the shedding will depend on the type of paint and the ambient temperature.
- When the surface to treat is of wood, after etching is convenient to sand before returning to painting.

Presentation

- 1 L. in box of 12 uds.
- 5L in box of 4 uds.
- 10L in box of 2 uds.



DECASPRAY

FLUX OF PAINTED



Flux of fast action specific for the elimination of painted on surfaces of cement, glass, not painted, metal traffic signs, facades of shops, etc.

APPLICATIONS

- Useful in all kinds of contracts of cleaning of buildings, large communities, public buildings, schools, transport centres, stations of Metro and train, Bank offices, cleaning urban furniture, statues, cultural centers, etc.
- Eases cleaning and maintenance tasks of public and private buildings allowing their conservation in perfect condition.

PROPERTIES

- Non viscous liquid, packaged in aerosol, constituted by a proper mixture of different solvents evaporation points allowing the dissolution of the most components of aerosols, resins, markers and utensils used in urban graffiti.
- Easy application can be used both on surfaces horizontal and vertical.
- It contains moisturizers additives that provide you with a high penetration capacity allowing the cleaning surfaces damaged by graffiti.
- Product packaged in aerosol with non-polluting propellant of the ozone layer.

INSTRUCTIONS OF USE

Shake well before use. Spray directly sobre the surface to be treated at a distance of 20-25 cm in bursts short.

Once applied leave act until it starts to dissolve the painting that is stripping. Re-apply the product leaving Act a couple of minutes. Below rinse the treated water surface by rubbing vigorously the surface.

Once the application are finish reverse the spray and actions the button to clean the output valve.

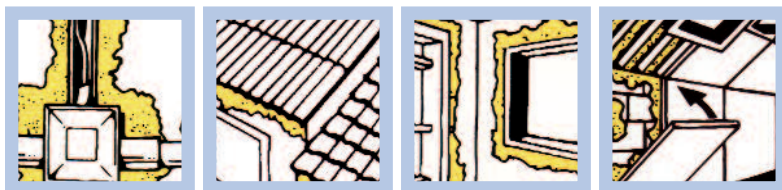
Presentation

- Aerosol 400 cc in box of 12 uds.



REVIMAX-P

POLYURETHANE PUTTY FOR
BOARDS OF HIGH QUALITY



**Sealer elastic one-component
based on polyurethane
particularly suitable for all kinds
of materials of construction, steel,
aluminium, marble, concrete, clay,
wood, glass and PVC.**

APPLICATIONS

- Applies in sealing joints of dilatation in construction, prefabricated, channels, conduits, metalisterías, etc.
- Provides structural adhesives resistant to vibrations, dilatations and contractions, concrete floors, slabs, bridges, industrial pavements subjected to traffic heavy, adhesive for placement of tiles, etc.
- Useful in all kinds of construction companies, contracts of rapid repair, masonry in general, maintenance of communities, companies plumbing, metalisterías, etc.

PROPERTIES

- It polymerized capturing moisture in the air, providing movies and very flexible and elastic joints.
- Multi-purpose: Excellent adherence sobre different substrates (concrete, mortar, aluminium, ceramic, porcelain, etc).
- Presents thixotropic properties which allows the application on vertical surfaces without pick up.
- Good resistance to chemicals.
- Polymerized once the material remains elastic throughout his life.
- Stable to the action of ultraviolet rays, ozone, acid rain, etc, without changes of tonality.

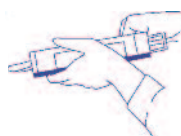
INSTRUCTIONS OF USE

Substrates where the product is applied must be dry and clean from dust, grease and loose material.

- Apply manual or pneumatic gun in lace width minimum of 5 mm and a maximum of 30 mm, joinings of 2 to 10 mm, with a minimum depth of 5 mm.
- For the calculation of the performance necessary to apply the expression: 2xprofundidad width.
- Application temperature: 1 ° C to 30 ° C.
- To improve the endings recommend the use of our wiper applications of silicone, getting together perfectly smooth and high quality.
- Cleaning of utensils used special solvent once completed applications.
- Compatible with most of the materials of construction, metal, polyester, wood, glass, PVC, etc.
- In the case of products with oxidation drying paint there may be failures in the drying of the paint, so it is recommended prior tests.

Presentation

- Plastic container of 310 ml in box of 24 uds.



Colors:
Ref. C1098 - WHITE
Ref. C10122 - GREY
Ref. C10123 - RED



**Elastic putty mono-component
based on acrylic dispersions of
high quality.**

APPLICATIONS

- Is used for sealing of joints of little or no movement, no subject the traffic of vehicles, exterior carpentry and together perimeter sealing of non-active fissures, cracks in plaster or masonry, ceramic materials and health, glass, aluminum, etc.
- Useful in all kinds of firms, contracts of fast repairs, masonry in general, maintenance of communities, plumbing companies, metalisterías, etc.

PROPERTIES

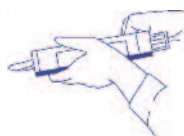
- It polymerized by physical drying, providing movies very flexible and elastic.
- Multi-purpose: Excellent adherence sobre different substrates (concrete, mortar, aluminium, ceramic, porcelain, glass, etc).
- Very good adhesion on porous materials.
- Repainting after drying.
- Stable and waterproof once dry.
- Applicable on indoors and outdoors surfaces.

INSTRUCTIONS OF USE

- Substrates where the product is applied must be dry and clean from dust, grease and loose material.
- Applied by manual or pneumatic gun in cords a minimum of 5 mm and a maximum of 20 width mm, with a minimum depth of 5 mm.
- For the calculation of the performance necessary to implement the expression: depth=width.
- Application temperature: 5 ° C to 30 ° C. Do not apply in case of risk of rain or frost.
- To improve the endings we recommend the use of our applications with silicone wiper, getting it together perfectly smooth and high quality.
- For the cleaning of utensils used water once completed the applications.

Presentation

- Plastic container of 310 ml in box of 12 uds.



SELLAFLEX-N

ELASTIC SEALER NEUTRAL
SILICONIC



**Elastic sealer neutral
one-component based to
silicones especially suitable
for all kinds of building
materials of fast drying.**

APPLICATIONS

- Applies in the sealing of joints of construction, glasswork, woodwork joints, masonry, ceramic materials and health, glass, boards of windows, carpentry of aluminium, etc.
- Useful in all kinds of firms, contracts of fast repairs, masonry in general, maintenance of communities, plumbing companies, metalisterías, etc.

PROPERTIES

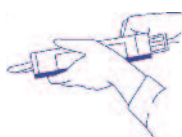
- It polymerized capturing moisture in the air, providing films and very flexible and elastic joints.
- Multi-purpose: Excellent adherence sobre different substrates (concrete, mortar, aluminium, ceramic, porcelain, glass, etc).
- Polymerized once the material remains elastic after drying.
- Stable to the action of ultraviolet rays without changes of colours.

INSTRUCTIONS OF USE

- Substrates where the product is applied must be dry and clean from dust, grease and loose material.
- Applied by manual or pneumatic gun in cords a minimum of 5 mm and a maximum of 30 width mm, with a minimum depth of 5 mm.
- For the calculation of the performance necessary to implement the expression: $2 \times \text{depth} \times \text{width}$.
- Application temperature: 1°C to 30°C .
- To improve the endings we recommend the use of our applications of silicone wiper, getting it together perfectly smooth and high quality.
- For the cleaning of utensils to use special solvent once completed applications.

Presentation

- Plastic container of 300 ml in box of 24 uds.



SELLAFLEX-S

ELASTIC SEALER UNIVERSAL
SILICONIC



Elastic sealer one-component based on silicones especially suitable for all kinds of construction materials, except PVC.

APPLICATIONS

- Applies in the sealing of joints of construction, glassware, materials ceramic and sanitary, combined window, coldrooms, ducts of air conditioning, aluminium carpentry, etc.
- Useful in all kinds of firms, contracts of fast repairs, masonry in general, maintenance of communities, plumbing companies, metalisterías, air conditioning installers, etc.

PROPERTIES

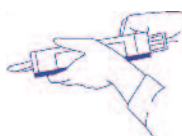
- It polymerized capturing moisture in the air, providing films and very flexible and elastic joints.
- Multi-purpose: Excellent adherence sobre different substrate (concrete, mortar, aluminium, ceramic, porcelain, glass, etc).
- Polymerized once the material remains elastic throughout his life.
- Stable to the action of ultraviolet rays without changes of colours.

INSTRUCTIONS OF USE

- Substrates where the product is applied must be dry and clean from dust, grease and loose material.
- Applied by manual or pneumatic gun in cords a minimum of 5 mm and a maximum of 30 width mm, with a minimum depth of 5 mm.
- For the calculation of the performance necessary to implement the expression: 2xdepth width.
- Application temperature: 1 ° C to 30 ° C.
- To improve the endings we recommend the use of our applications of silicone wiper, getting it together perfectly smooth and high quality.
- For the cleaning of utensils to use special solvent once completed applications.

Presentation

- Plastic container of 300 ml in box of 12 uds.





Plastic paint specially designed to protect and decorate the interior of concrete and cement swimming pools, simultaneously providing waterproofing and an aesthetically perfect finish.

APPLICATIONS

Recommended for covering, treating and decorating:

- Public and private swimming pools.
- Water parks.
- Pools, ponds.
- Public and private fountains, etc.

PROPERTIES

- **Very resistant to sun tan oils.**
- Perfectly resists the attack of chemical products used to clean swimming pools.
- Paint based on modified acrylic co-polymers in a water solution.
- **Does not contain solvents that are environmentally harmful**, irritating, or that cause inflammation.
- Plugs the pores in the concrete and **resists the action of fresh and salt water.**

- Has **very good resistance to ultraviolet radiation and to heat.**

- Is **easily re-painted.**

- Has an optimal balance between flexibility and durability.

COVERAGE

Illustrative coverage 8-10 m²/kg.

Dry time: 1 Hour. Repeated: 4 hours. The painted surface can be used after 24 hours of its painting: 24 horas.

INSTRUCTIONS OF USE

For an optimal result, follow these steps:

1. The surface must be clean and dry. Remove remains of paint, lime scale, etc, with our DESCAL scale remover.
2. If the surface is of new concrete, apply a first coat of paint diluted in water in the proportion 1:1.

3. When the first coat is dry, apply a second coat of undiluted paint. If re-painting, a single, undiluted coat is sufficient.

4. Do not fill the pool for 2 or 3 days after treatment.

Presentation

- 5 Kg. in box of 4 uds.



Colors
Ref. C1035- BLUE
Ref. C1075- WHITE



Thermoplastic acrylic paint with levelling and rheological additives, suitable pigments and solvents for fast curing.

APPLICATIONS

Used for pool-wall treatment in private and public swimming pools, water parks, special pools, etc.

- Easy-to- apply, high-performance product
- It is very useful for treatment and repair of new or old swimming pools so it is suitable for construction companies, water park operators, city halls, large communities, sports facilities, etc.

PROPERTIES

- Provides flexible, hard surfaces able to resist contraction and dilation from changes in ambient temperature.
- Its composition waterproofs the swimming pool walls preventing leaks and water loss.
- Quickly adheres to any type of porous surface.
- Is compatible with acrylic paints, water and solvents.

- Allows facilities to be put into operation in a very short time.

COVERAGE

The application yield depends on the surface condition, being 4 to 6 m²/kg.
Curing time varies around 15 minutes.
Repainting: 1 hour.

INSTRUCTIONS OF USE

Before applying product, clean the surface well to remove grease and dirt.

Repair the surface, remove imperfections and chips.

Apply with a roller or brush, spreading several coats.
Clean tools with our special solvent.

Presentation

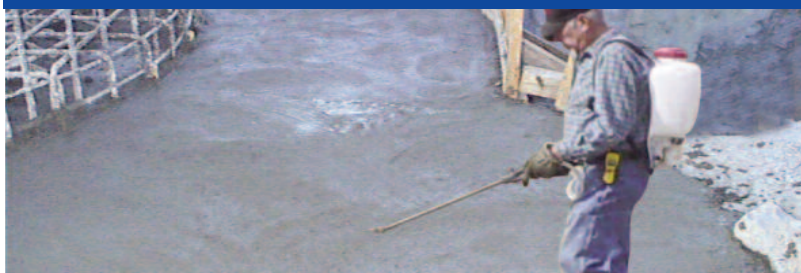
- 5 Kg. in box of 4 uds.



Colors:
Ref. C1090 - BLUE
Ref. C00124 - WHITE

REVICUR

CONCRETE CURING MEMBRANE



Product to protect the surface of fresh concrete, creating a layer that prevents the rapid evaporation of water during setting to ensure the temporary hydration and protection of the concrete against carbonating and bad weather.

APPLICATIONS

Recommended for protecting concrete in general; essential in:

- High temperatures.
- Damp.
- Strong winds.

PROPERTIES

- Its formula, based on synthetic resins, gives the concrete **impermeability and resistance to acids** and bases within the normal values in construction and to atmospheric pollution such as CO₂, SO₂, SO₃, NO₂, etc.
- **Micro-porosity, thanks to which the film can breathe water vapour**, preventing deformations, blistering and scaling in the finished film.
- **Unaffected by UV radiation.**
- **Prevents the growth of algae and fungus.**

• **Can be applied to damp surfaces and to concrete recently removed from the mould.**

• **Has perfect adherence to concrete, limestone and lime or plaster renderings.**

• **Prevents splits from forming.**

COVERAGE

Depending on the porosity of the concrete; on average: **6 m² per Kg. of product.**

INSTRUCTIONS OF USE

Applied by manual or mechanical spray.

Apply as supplied, without dilution.

Applied just when the concrete shows a matt surface.

Presentation

- 5 Kg. in box of 4 uds.
- 10 Kg. in box of 2 uds.





Based on enzymes (micro organisms and nutrients), effective for clearing blockages in pipes, drains, grease traps, cesspits, etc.

APPLICATIONS

- Used for treating cesspits, blind shafts, waste water catch pits, portable toilets, maintenance of industrial installations, slaughterhouses, cutting rooms, meat factories, etc.
- Allows the tipping parameters to be controlled in waste water, treatment plants, etc.
- Reduces odours in poultry farms, pig farms, stables, etc.
- Public and private fountains, etc.

PROPERTIES

- Quick and selective action against organic matter.
- Reduces surface solid contents by 77% and bottom solids by up to 40%.
- Acts over a wide range of pH, from 5.0 to 9.0.
- Its continued use reduces chemical oxygen demand and suspended solids, decreasing the frequency for emptying cesspits.

- Its continued use provides control over the production of methane and other gases to levels below 0.1%, preventing bad odours.

COVERAGE

The coverage is variable, depending on the task in hand.

INSTRUCTIONS OF USE

Used dissolved in water according to the pollutant load to be treated.

COVERAGE ACCORDING TO APPLICATION

APPLICATION	TREATMENT	MAINTENANCE
Elimination of bad odours in farms, stores, etc.	200 g/10 l of water/10 tonnes animal weight	-
Control of organic matter in slaughterhouses, cutting rooms.	800 g/m ³ of water, every 3 days	100 g/m ³ daily
Odour control in manure stores, poultry breeders.	10 g/1000 birds weekly	-
Treatment of cesspits.	50 g/m ³ of water	25 g/m ³ of water
waste water treatment plants	1 kg/5000 m ³	500 g/5000 m ³ weekly
Digesters, active sludge tanks	10 g/m ³ of water	10 g/m ³ of water weekly
Cleaning pipes, drains, grease traps	100 g/500 litres of water	50 g/500 litres of water weekly
Restaurants, large living areas	50 g/500 meals per day	-
Treatment of domestic waste	400 g/house	100 g/house weekly
Cleaning pipes, portable toilets, cesspits	500 g/m ³ of water	50 g/toilet

Presentation

- 1/2 Kg. in box of 12 uds.
- 1 Kg. in box of 12 uds.
- 5 Kg. in box of 4 uds.



REVI-PACK

EFFERVESCENT BIOLOGICAL
TREATMENT TABLETS



APPLICATIONS

Used in the treatment and maintenance of septic tanks, cesspools, sanitary facilities, wastewater collectors, community sewage water, large groups, etc..

- Very useful for facility maintenance companies, hotels, residences, military camps, etc.
- High-performance product, no special care required.



**Biological activator for
wastewater treatment made of
the best mixture of
nonpathogenic microorganisms,
enzymes and aroma.**

PROPERTIES

- Quick, effective action for organic matter, garbage, wastewater, etc.
- Its balanced composition of microorganisms and enzymes ensures quick, long-lasting action.
- Prevents obstruction, stoppage and foul odours from pipes, drains, toilets, etc.
- Maintains the biological balance in the facilities they are used in.
- Handling is nonhazardous as it contains no toxic or harmful substances.
- Natural, caustic-free, environmentally-friendly product
- Easy-dose tablets come in individual 12-tablet packs. Packages contain a 6-month supply.

INSTRUCTIONS OF USE

Use from the package as it comes. Open the bag and add the table directly to the toilet. Wait until it dissolves in the water and then flush.

The tablet can also be dissolved in a bucket of water and then poured directly down the drain, into cesspool or septic tank.

Repeat treatment every fortnight dissolving another tablet.

Presentation

- 240 gramos in box of 8 uds.



REVITOP

ANTISKID FOR ENAMELLED SURFACES



This mixture of inorganic acids, surfactants and rustproofers, is suitable for use in contact with enamelled surfaces, tiles, porcelain, etc.

APPLICATIONS

Used as an antiskid treatment on gres-tile floors, glazed ceramics, enamelled surfaces, marble, granite, natural stone, etc.

- Provides antiskid surfaces for bathtubs, shower stalls, gres tiles, etc.
- Indispensable for assisted-living facilities, senior-citizen care facilities, large groups, children's camps, communities, hotels, sports facilities, etc.
- Very useful for maintenance companies, plumbing contractors, etc.

PROPERTIES

- A chemical reaction acts on the surface it is applied to creating micropores that **prevent skidding when wet**.
- The treatment **leaves no product residue on the surface**.
- Increases the friction coefficient between the surface and shoes or feet, avoiding skidding and slipping on wet surfaces.
- **Quick, easy treatment**, with no need for maintenance, except for wear and tear from traffic.
- Acts quickly, **allowing the treated surface to be put into use immediately after removing excess product**.
- Avoids the need for rugs, anti-skid strips, etc., in bathtubs and porcelain surfaces, assisting in the conservation of pieces treated for fungus.
- Provides an invisible finish, **not changing the look or colour of the treated surfaces**.

INSTRUCTIONS OF USE

Clean the surface to be treated, removing dust, grease and dirt before applying the product. Rinse with water and dry.

Apply as it comes from the container, as a spray or with a sponge over the entire surface. Let cure for 5-30 minutes and then rinse well with water.

Curing times vary depending on the material treated. On tiles, let set 5-7 minutes. On polished marble curing takes from 4 to 6 minutes. On granite let set for 20-25 minutes. If necessary leave on longer depending on results.

For bathtubs, shower stalls, etc., put the plug in the drain. Apply and let set for 8-10 minutes, and then rinse well with water.

Presentation

- 1L in box of 20 uds.
- 5L in box of 4 uds.
- 10L in box of 2 uds.



REVIGRES

ANTI-SLIP TREATMENT FOR STONEWARE
AND PAINTED SURFACES



Based on a mixture of inorganic acids, dispersal agents, viscosity regulators and corrosion inhibitors, suitable for use on all types of stoneware and painted surfaces, both horizontal and vertical.

APPLICATIONS

Used to give an anti-slip treatment for all types of stoneware and painted surfaces.

- Of essential use in sports centres, hotel swimming pools, gymnasiums, salt water treatment centres, water therapy centres, etc
- Meets the specifications of the technical building code, section SU 1, class 3. It is especially recommended for damp indoor and outdoor surfaces, areas in which users are barefoot and the bottoms of swimming pools less than 1.5 m deep.

PROPERTIES

- Acts by chemical reaction on the surface to which it is applied, **creating micro-pores that prevent slipping on damp surfaces.**
- The treatment **leaves no remains** of the product on the surface.
- Increases the coefficient of friction between the surface and footwear or feet, preventing slipping on damp surfaces.
- **Simple and quick treatment, requiring no further maintenance**, except where constant use has caused abrasion.
- **Acts quickly**, allowing treated surfaces to be used immediately after all remains of the product have been removed.
- Contains viscosity regulator additives that **allow the product to be applied on horizontal and vertical surfaces.**
- On vertical surfaces, increases the contact time with the surface, allowing large areas to be treated without drips.
- Provides invisible finishes, **without changing the appearance or colour of the treated surfaces.**

INSTRUCTIONS OF USE

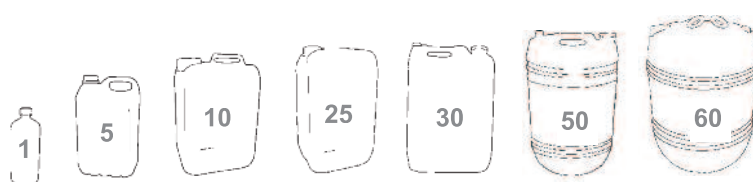
Before applying the product, clean the surface of dust, grease and dirt. Wash with water and dry.

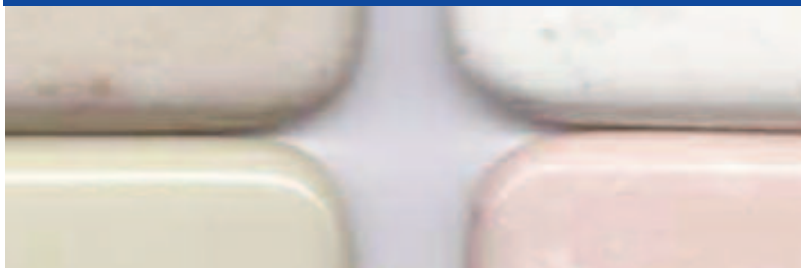
Apply as described on the packaging, with a spray or sponge, soaking the surface well. Allow to act on stoneware for at least 45 minutes then wash with plentiful water.

As a rough guide, the performance is 2.5 to 3 m²/litre of product. The product should be spread well over the entire surface and retouched if necessary during the drying time.

Presentation

- 1L in box of 20 uds.
- 5L in box of 4 uds.
- 10L in box of 2 uds.





A mixture of specific additives for use in contact with all sorts of silicones.

APPLICATIONS

For use in installation shops and at construction sites on marble or granite surfaces, tiles, enamelled surfaces, sealing and calking joints.

- Very useful in construction companies, building maintenance contractors, tiling subcontractors, bathrooms, etc.
- High-performance product providing a high-quality finish whilst keeping tools clean and reducing labour.

PROPERTIES

- Contains additives that improve spreading silicon in joints, providing a **smooth, perfect finish**.
- **Keeps silicone from sticking to skin and tools, and makes cleaning easier.**
- **Makes it possible to smooth out joint surfaces.**
- **Does not affect curing or elasticity of the silicone joints it is applied to.**

INSTRUCTIONS OF USE

It can be used on recently applied silicone beads and joints as it comes from the container, moistening your finger in the product and passing it over the silicon bead.

It may also be applied by spraying the surface where silicone has been applied and then smoothing it out with a spatula.

Presentation

- 1L in box of 20 uds.
- 5L in box of 4 uds.





APPLICATIONS

Used to fix guide lines in building.

- Very useful building companies, contracts, public works, housing associations, etc.



Based on solvent-free synthetic emulsions, especially recommended to prevent the erasure and deterioration of guide lines in building.

PROPERTIES

- **Makes guide lines durable**, preventing their erasure due to passage of persons or bad weather.
- **Does not contain solvents.**
- **Resists the alkalinity of cement.**
- Allows the treated surface to breathe, waterproofing the guide lines to prevent their erasure.
- Tools are easily cleaned with water, remaining in perfect condition for re-use.
- **Does not produce shining or visible changes to the surface to which it is applied.**
- **Dries quickly**, making its use very profitable on all types of building work.

INSTRUCTIONS OF USE

Used by spraying directly onto the guide line with a performance of 30-50 ml/m² (50 to 100 metres per litre of product).

The drying time is 10 - 15 minutes to allow the guide line to be fixed.

Should be applied to clean and dry surfaces, free of grease, oil and dirt.

Use water to clean tools.

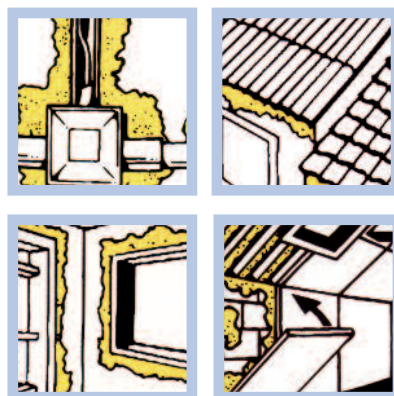
Presentation

- 1L in box of 20 uds.
- 5L in box of 4 uds.
- 10L in box of 2 uds.



REVIFOAM

POLYURETHANE MONOCOMPONENT



Polyurethane foam
Mono-component for insulation
and filler, spray.

APPLICATIONS

- Applies in the filling and sealing of all kinds of openings between materials construction on walls and ceilings acting as insulation and acoustic.
- Allow the placement and implementation in work of Windows, doors, etc., shortening the deadlines for completion of work.
- It improves performance in operations isolation of refrigeration equipment and industrial cold.

PROPERTIES

- It polymerized capturing moisture in the air, providing a foam stable films and very flexible joints and elastic.
- Multi-purpose: Combines adhesion properties, fixation, sealed and filled with a great capacity for insulation thermal and acoustic.
- Provides a foam dry once absorbed vibrations and movements between materials. At the end of the process of expansion, its volume is between 30 and 40 times higher than the initial volume.
- Once dry the material not contracted or dilates.
- The fire resistance classification: B3.
- Product packaged with propellant gases that do not they damage the ozone layer.

INSTRUCTIONS OF USE

- Substrates where the product is applied must be dry and clean from dust, grease and loose material.
- Before applying the product moisten the substrate for improving adherence, accelerate hardening and optimizing the cell structure.
- Shake well spray. Place the cannula of application.
- Push the valve with the inverted aerosol and distribute the material by the entire surface where is going to apply. A time polymerized material cut the excess foam mechanically. Do not burn.
- Application temperature: 5 ° C to 30 ° C.
- Do not apply on substrates of polyethylene (PE) or Polypropylene (PP).
- For the cleaning of utensils to use special solvent before hardening.

Presentation

- Aerosol 750 ml in box of 12 uds.



REVIPRIM

ADHESION PROMOTER
GALVANIZED SURFACES



Been based on styrene-acrylic copolymers modified with additives antioxidants and promoters special bond.

APPLICATIONS

- Used before operations paint on surfaces of material galvanized, aluminum, copper, bronze, etc., improving their adherence.
- It is useful in all types treatment and protection workshops metals, construction companies, contracts of works, repair companies, etc.
- High performance product reduces the cost of hand of work and operation facilities industrial, prolonging the periods maintenance.

PROPERTIES

- Improves adhesion on metallic surfaces, providing resistance to atmospheric agents, both exterior and interior surfaces.
- It provides hard and flexible films that allow resist dilations and contractions in metal materials where applies.
- Acts as a bridge between surfaces not ferrous (aluminium, galvanised iron, carbon steel, stainless steel, copper, bronze, etc) by avoiding that the painting of termination comes off of the substrate by sudden changes of temperature, sunlight, temperature environment high, etc.
- It contains antioxidant additives that protect the surfaces treated against corrosion.
- It solves the problems of adhesion on surfaces little porous or non-porous metal.
- Meets the requirements of the legislation in force in field of emissions of volatile organic compounds, not surpassing the strict emission limits for the year 2010 (category a. Subcat. I: Primer for metals reactive zinc and aluminium. Type BA. VOCmax 2007: 140 g/L. VOCmax 2010: 140 g/l. VOCmax product: 42 g/l).

INSTRUCTIONS OF USE

- Before application stir well the product. Remove dirt, grease and oxide adhered to the surface. Sand if necessary to improve the completion.
- Applies as it comes in the bottle brush or roller, without dilution prior or diluting it with a 1-2% water, according to needs.

Performance: 9-10 m²/Kg.

Drying time: 15 minutes. Repainted: 1 hour.

Solvent for cleaning utensils: water.

Once dry the product is compatible with paintings to the solvent, decorative enamels and paints of termination.

Presentation

- 1 Kg. in box of 16 uds.
- 5 Kg. in box of 4 uds.
- 10 Kg. in box of 2 uds.

